

*M. putrefaciens*

*Me. florum* L1

*S. taiwanense* CT-1

*S. diminutum* CUAS-1

*S. culicicola* AES-1

*S. apis* B31

*S. sabaudiense* Ar-1343

*A. brassicae* O502

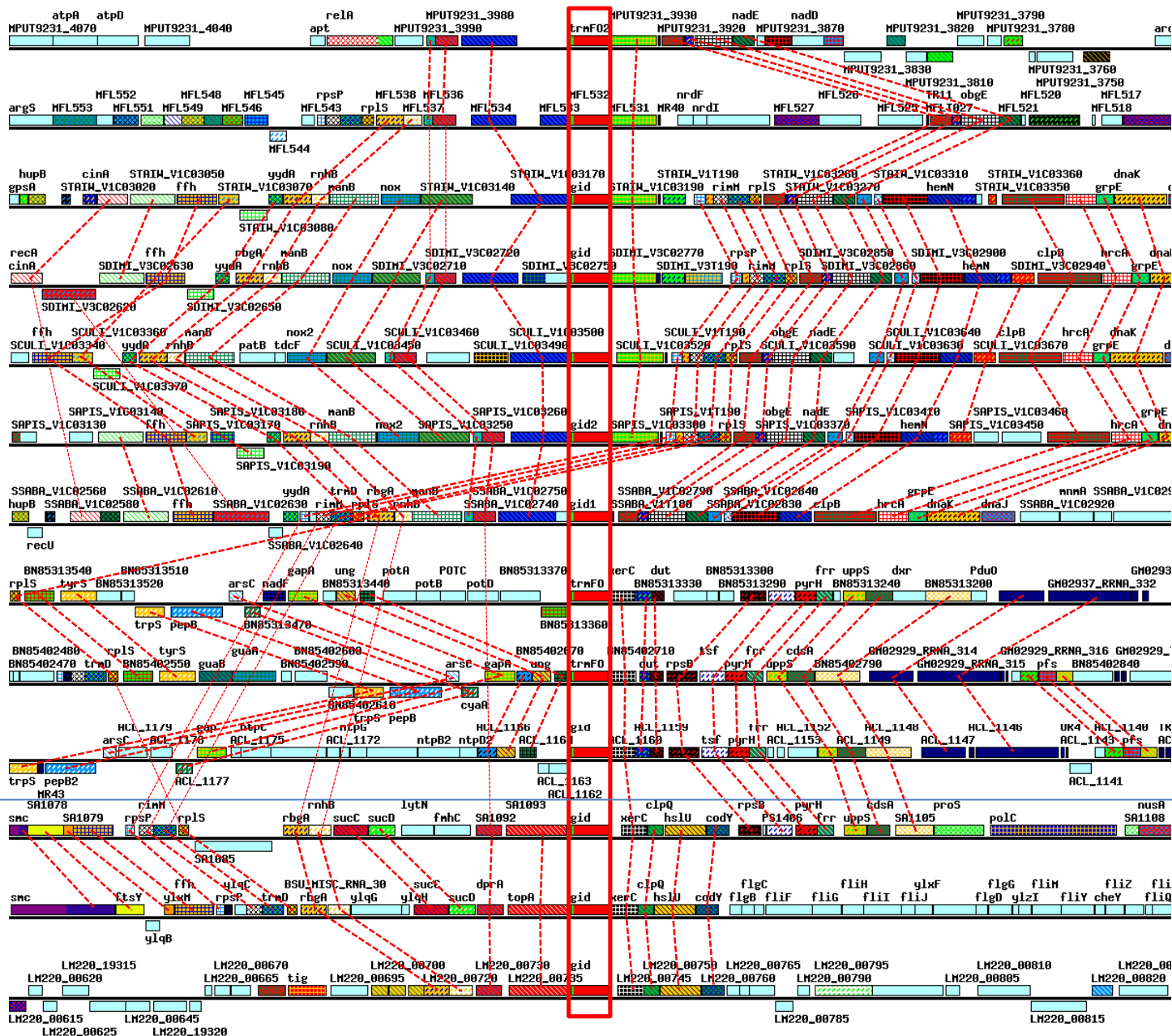
*A. palmae* J233

*A. laidlawii* PG-8A

*S. aureus* N315

*B. subtilis* 168

*L. monocytogenes* J1-220



molluscates

non-molluscates

**Figure S5.** Genomic context of *trmFO* homologs. Analysis of synteny and genome context was performed using the MBGD database. Homologous *trmFO* genes are framed and coloured in red. Other homologs are coloured the same and connected with red dotted lines.