

Article

The Association between Non-Alcoholic Fatty Liver Disease and Dynapenia in Men Diagnosed with Type 2 Diabetes Mellitus

Atilla Bulur^{1*} and Ridvan Sivritepe²¹ Gastroenterology and Endoscopy Private Clinic, Aydin, Turkey² Department of Internal Medicine, Istanbul Medipol University Faculty of Medicine, Istanbul, Turkey

*Corresponding author: atillabulur@hotmail.com

Abstract: Background: Dynapenia and non-alcoholic fatty liver disease (NAFLD), are common, especially in the middle and advanced-age diabetic male population. **We aimed** to examine the clinical features, NAFLD severity, and parameters associated with the presence of dynapenia in type 2 diabetes mellitus (T2DM) cases. **Material and Methods:** One hundred thirty-five male patients diagnosed with T2DM between 45 and 65 years of age were included. Patients were staged by ultrasonography according to NAFLD status. **Results:** There were significant differences in muscle strength, upper arm circumference, calf circumference, and up-and-go test scores between the NAFLD groups ($p < 0.001$ for all). The frequency of dynapenia was lower, and arm and calf circumferences were higher in patients without NAFLD. The muscle strength, upper arm circumference, calf circumference, and up-and-go test scores were significantly lower in the dynapenic group compared to the non-dynapenic group ($p < 0.005$ for all). The prevalence of dynapenia increased along with the increase in NAFLD stages ($p < 0.001$). **Conclusions:** We detected a significant association between NAFLD and dynapenia in middle-aged men with T2DM. As muscle strength decreases, the amount of fat in the liver increases, and as the fat in the liver increases, muscle strength decreases.

Keywords: type 2 diabetes mellitus; non-alcoholic fatty liver disease; dynapenia

1. Introduction

Type 2 Diabetes Mellitus (T2DM) is one of the most common noncommunicable diseases in developing countries. Today, more than 400 million people are known to have T2DM, and this number is estimated to reach 642 million by 2040. NAFLD refers to the presence of hepatic steatosis without a condition to cause secondary hepatic fat deposition. Studies conducted in the USA reported NAFLD prevalence between 10% and 46%. In western industrialized countries where central obesity, T2DM, dyslipidemia, and metabolic syndrome are common, the most common liver disease associated with these diseases is NAFLD. It is predicted that NAFLD prevalence will increase along with the increase in T2DM incidence (1-3).

Insulin resistance is one of the most important risk factors for both T2DM and NAFLD. However, the mechanisms underlying the development of NAFLD and T2DM are still not fully clarified. Furthermore, hepatic fat accumulation, changes in mitochondrial function and energy metabolism, and inflammatory cytokines produced from various cell types, including immune cells, lipotoxins, and adipocytokines, have been suggested to play an important role in the development of both NAFLD and T2DM (4).

Dynapenia is a decrease in muscle strength without a decrease in muscle mass due to aging. Theories have been presented that dynapenia may be caused by the disturbances in the stimulation-contraction process in the skeletal muscle along with the effect of many neuronal factors such as the deterioration in the ability of the nervous system to innervate

the skeletal muscle, having fewer motor neuron units with aging, and decrease in the excitability of neurons (5-7).

Dynapenia and NAFLD are conditions that are becoming increasingly common, especially in the middle and elderly diabetic male population, reducing physical performance and quality of life; The treatment process, costs, and complications constitute an important social problem.

In our study, we aimed to examine the clinical features, NAFLD severity, and parameters that may be associated with the presence of dynapenia in middle-aged male T2DM patients, and to reveal the associated factors. Such a clinical study has not been done before in the literature, which adds value to our study.

2. Materials and Methods

This study was a cross-sectional, single-center, and prospective study. All procedures performed in studies involving human participants followed the ethical standards of the institutional and/or national research committee and with the 1964 Helsinki Declaration and its later amendments or comparable ethical standards. The study was approved by the Clinical Research Ethics Committee of the University of Health Sciences, Umraniye Training and Research Hospital (Date: 29.04.2021, No: 106). The purpose and procedures of the study were explained to all participants, and written informed consent was obtained from them. One hundred and thirty-five male patients were enrolled in the study due to statistical power analysis. We calculated the power analysis as follows; the minimum number of patients required to complete our study, which was calculated using the descriptive statistics in the article by Zhang Y. et al., with a confidence level of 95% ($\alpha=0.05$) and a power of 80% was 131 patients (Hintze, J. (2011). PASS 11. NCSS, LLC. Kaysville, Utah, USA. www.ncss.com) (8). Male patients who were admitted to our internal medicine outpatient clinic of Istanbul Beykoz State Hospital in Turkey were included in the study according to the admission order. Patients between 45 and 65 years of age diagnosed with T2DM, without acute diabetic complications within the last three months, and with normally kidney and liver function tests (GFR>90 mL, ALT<55 U/L, AST<34 U/L) were included in the study. The patients below 45 years and over 65 years, as well as those with T1DM, acute or chronic infection, neurological disease, history of major surgery, heavy alcohol consumption (210 gr (for men)/week), autoimmune hepatitis, acute or chronic viral hepatitis, cirrhosis, use of drugs associated with fatty liver disease and malignancy weren't included in the study. Detailed anamnesis was taken from all patients, and physical examinations were performed.

Blood samples were taken in the morning on an empty stomach and analyzed simultaneously in the same laboratory. T2DM was diagnosed according to ADA criteria (9).

Anthropometric measurements such as height and body weight of the patients were measured according to standardized guidelines. Arm circumference below 22 cm: lower; at and above 22 cm: normal; calf circumference below 31 cm: lower; at and above 31 cm: normal (10).

The physical performance of the patients was evaluated by up and go test. The performance score was evaluated as follows; 1= normal, 2= very slightly abnormal, 3= slightly abnormal, 4=moderately abnormal, and 5= severely abnormal (11).

Using a hydraulic dynamometer, the right-left hand muscle strength of the patients was measured (12-0240 Baseline Hydraulic Hand Dynamometer 200 LB Standard W/Case). Muscle strength measurements were performed before blood sampling not to affect the test. Among male patients, more than 30 were normal, and less than 30 were accepted as decreased muscle strength in the measurements (12).

Patient values such as muscle mass, body fat ratio, metabolism/body fat, and lean body mass volumes were measured using a multi-frequency bioimpedance analysis (BIA) device (Fully automatic body bioimpedance analyzer, Japan). The cut-off value for SMMI ≥ 10.76 kg/m² was accepted as normal, 8.51-10.75 kg/m² was accepted as moderate muscle mass reduction, ≤ 8.50 was accepted as severe muscle mass reduction for men. Dynapenia

was defined as a combination of normal SMMI index and decreased muscle strength, according to Manini and Clark (13). The patients were then divided into two groups dynapenic and non-dynapenic.

A radiologist evaluated the presence and staging of NAFLD through transabdominal ultrasonography (USG) (Acuson Sequoia 512, Siemens, USA). The criteria of the Turkish Gastroenterology Association were used for the diagnosis of the fatty liver through USG. Hepatic echogenicity typically consists of measurements of the echo difference between the liver and kidneys, evaluation of echo penetration into the deep part of the liver, and determination of the clarity of blood vessel structures. The degree of lipoidosis severity was evaluated clinically as used in daily practice by dividing it into four classes. The ultrasonography findings in hepatic steatosis are presented in figure 1 (**Figure 1**). Grade-0: no lipoidosis; grade-I: mild NAFLD; grade-II: moderate NAFLD; grade-III: severe NAFLD (14-16). All parameters were compared between these groups, and the association between NAFLD and dynapenia in diabetic men was evaluated.

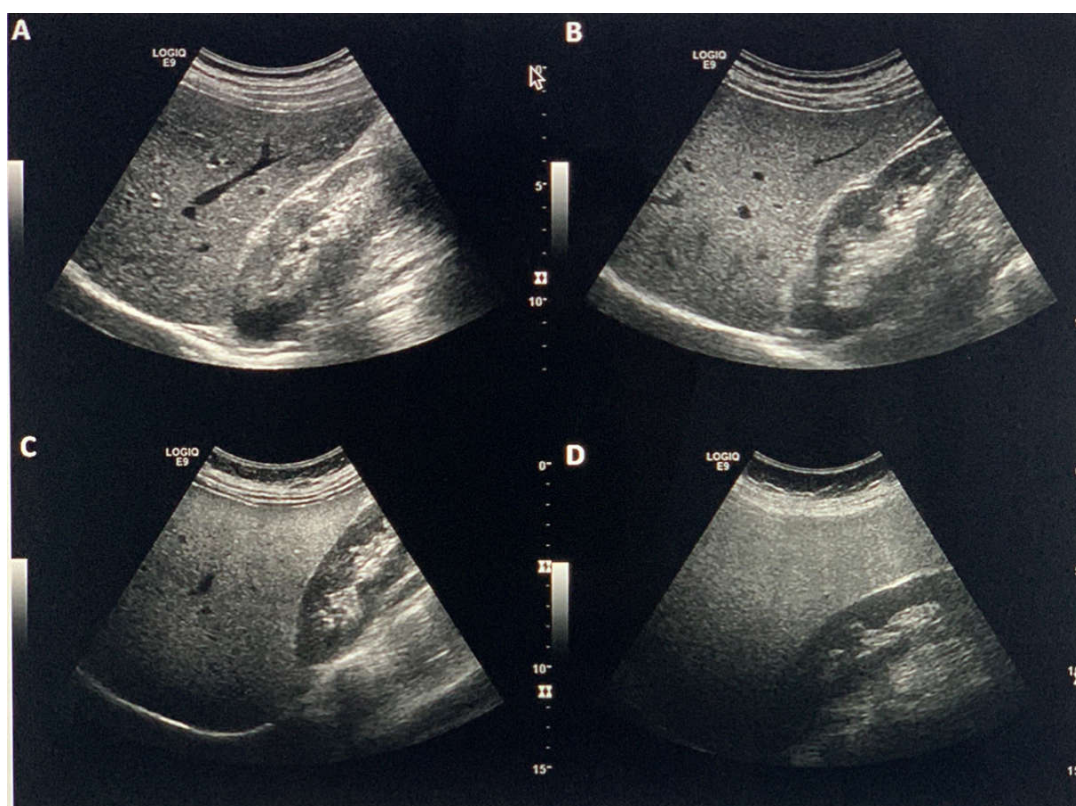


Figure 1. Ultrasonography findings in hepatic steatosis. Liver with no increase in echogenicity compared to kidney (A). While the diagnosis of fatty liver is excluded, mild hepatic steatosis is seen in B, moderate in C, and severe in D [55].

The statistical analysis was conducted through the MedCalc Statistical Software version 12.7.7 (MedCalc Software bvba, Ostend, Belgium). The normality of continuous variables was analyzed using Shapiro-Wilk's test. Descriptive statistics were expressed by the mean and standard deviation for normally distributed variables and the median for the non-normally distributed variables. Non-parametric statistical methods were utilized to analyze the values with skewed distribution. Mann Whitney U test was used to compare two non-normally distributed groups. Kruskal Wallis test was used to compare two non-normally distributed variables. As a Pairwise Post Hoc comparison, Bonferroni corrected Mann Whitney U test was performed. Categorical variables were evaluated by χ^2 test and expressed as observation counts (and percentages). Statistical significance was accepted when the two-sided p-value was lower than 0.05.

3. Results

The age average of the participants was 55.2±4,6 (45-65) years, the mean muscle strength was 35.5 kg, the mean HbA1c was 9.9%, and the mean diabetes duration was 5.9 years. USG evaluation of the patients revealed that NAFLD was not detected in 34 (25.2%) patients, mild NAFLD was detected in 34 (25.2%) patients, moderate and severe NAFLD were detected in 48 (35.6 %) and 19 (14.1%) patients, respectively. Forty-two (31.1%) patients met the criteria for dynapenia, and 93 (68.9%) patients were non-dynapenic. The demographic data, anthropometric measurements, and clinical and biochemical parameters of the patients are summarized in Table 1 (Table 1).

Table 1. Demographic Data, Anthropometric Measurements, Clinical and Biochemical Parameters of the Patients.

Parameter	Median	Minimum	Maximum
Age (years)	55	45	65
Height (cm)	165	145	189
Weight (kg)	76	44	130
BMI (kg / m ²)	28.6	17	49.3
Muscle Strength (kg)	36	18	60
Upper arm circumference (cm)	24	14	41
Calf circumference (cm)	32	21	39
SMMI index	39.4	26.6	61.8
Hba1c (%4,7-%5,6)	9.6	6.5	15.3
Glucose (70-100 mg/dL)	188	69	373
Creatinine (<1 mg/dl)	0.7	0.5	1.1
C-reactive protein (<3mg/l)	9	0.2	25
Diabetes Duration (years)	6.1	1	23
HDL (40–60 mg/dL)	33	5	75
Total Cholesterol (<200 mg/dL)	245	107	359
Triglyceride (<150 mg/dL)	145	59	321
Leukocyte (4,1-8,9 10 ³ /ul)	9	3	15.3
Blood Urea Nitrogen (10-20 mg/dL)	32	15	57
Hemoglobin (12,4-14,8 g/l)	14.3	10.8	17.7
Platelet (150.000-450.000/mm ³)	176	100	485

(BMI: Body mass index. SMMI index: Skeletal muscle mass index. HBA1C: Hemoglobin A1c. HDL: High-density lipoprotein cholesterol. LDL: Low-density lipoprotein cholesterol)

There were significant differences in muscle strength, upper arm circumference, calf circumference, and up-and-go test scores between the NAFLD groups ($p < 0.001$ for all). We detected that arm and calf circumferences were higher in patients without NAFLD; physical performance was better, and dynapenia prevalence was lower. There was no difference between the groups regarding other parameters, which were summarized in Table 2 (Table 2).

Table 2. Review of All Parameters according to NAFLD Groups.

Med(min-max)	Non-NAFLD	Mild NAFLD	Moderate NAFLD	Severe NAFLD	P value
Age (years)	54.5(46-65)	57(47-65)	54(45-65)	55(45-65)	0.626
BMI (kg / m ²)	28.9(17-49.3)	31.1(19.6-41.3)	24.2(18,6-43,8)	31(17.4-42)	0.362
Muscle Strength (kg)	44(24-50)	38(28-60)	30(18-50)	24(18-42)	<0.001*
SMMI %	39.1(28.9-48.3)	39.4(27.1-47)	40(26.6-61.8)	38.4(29.2-44)	0.312
Upper arm circumference (cm)	28(15-34)	26(24-27)	21(17-24)	18(14-41)	<0.001*
Calf circumference (cm)	34(21-39)	33.5(28-39)	30.5(26-36)	29(21-39)	<0.001*
Hba1c (%4,7-%5,6)	9.5(6.5-14.2)	10.3(6.5-14.5)	9.3(6.5-13.6)	10.6(6.5-15.3)	0.126
Glucose (70-100 mg/dL)	204(110-372)	194.5(101-367)	171.5(69-365)	227(92-373)	0.211
Blood Urea Nitrogen (10-20 mg/dL)	35(15-54.9)	34(15-57)	31(15-51)	27(16-46)	0.031
Creatinine (<1 mg/dl)	0.7(0.5-1.1)	0.7(0.5-1.1)	0.7(0.5-1.1)	0.7(0.5-1.1)	0.448
C-reactive protein (<3mg/l)	9.3(0.2-20)	6.5(2-23.4)	9(0.7-25)	13.4(0.2-24)	0.137
Total Cholesterol (<200 mg/dL)	259(107-359)	236(107-302)	245(108-356)	235(137-359)	0.124
HDL (40–60 mg/dL)	30(5-75)	33(5-72)	33.5(5-56)	37(12-38)	0.354
Triglyceride (<150 mg/dL)	122.5(60-258)	159.5(59-298)	138(60-321)	154(72-299)	0.058
Leukocyte (4,1-8,9 10 ³ /ul)	8.8(5.3-15.2)	9(4-15.1)	9(4-15.2)	9.6(3-15.3)	0.8
Hemoglobin (12,4-14,8 g/l)	14.2(11.7-16.7)	14.5(11.7-17.3)	14(10.8-15.9)	15(11.5-17.7)	0.16
Platelet (15-450.000/mm ³)	168.5(100-458)	182(112-428)	177(102-485)	182(103-441)	0.87

(BMI: Body mass index. SMMI index: Skeletal muscle mass index. HbA1c: Hemoglobin A1c. HDL: High-density lipoprotein cholesterol. LDL:

Low-density lipoprotein cholesterol

*Kruskal Wallis test Paired Samples t test

There was no lipoidosis in 4 patients in the dynapenic group; lipoidosis was not detected in 30 patients in the non-dynapenic group. The prevalence of dynapenia increased, especially in the moderate and severe NAFLD groups. The distribution of dynapenia is present in Table 3 (Table 3).

Table 3. NAFLD Frequency in Dynapenia-Nondynapenia Groups.

	Dynapenia group (n,%)	Nondynapenia Group (n,%)
Non-NAFLD	4(9.5%)	30(32.3%)
Mild NAFLD	2(4.8%)	32(34.4%)
Moderate NAFLD	22(52.4%)	26(28.0%)
Severe NAFLD	14(33.3%)	5(5.4%)

(BMI: Body mass index. SMMI index: Skeletal muscle mass index. HbA1c: Hemoglobin A1c. HDL: High-density lipoprotein cholesterol. LDL: Low-density lipoprotein cholesterol

*Kruskal Wallis test Paired Samples t test)

The patients were then compared according to their dynapenic status as dynapenic and non-dynapenic. All the comparisons are summarized in Table 4 (Table 4). The muscle strength, upper arm circumference, calf circumference, and up-and-go test scores were significantly lower in the dynapenic group when compared to the non-dynapenic group ($p < 0.001$, $p < 0.001$, $p < 0.001$, $p = 0.044$, respectively). There wasn't any statistically significant difference between the two groups for age, muscle mass, SMMI index, HbA1c, and fasting glucose measurements. The severe NAFLD ratio was 33.3% in the dynapenic group and 5.4% in the non-dynapenic group.

Table 4. Review of All Parameters according to Dynapenia Groups.

Med(min-max)	Dynapenia group n=42	Nondynapenia Group n=93	p Value
Age (years)	55(45-65)	55(45-65)	0.4771
BMI (kg / m ²)	28.4(17.4-40.7)	28.6(17-49.3)	0.7472
Muscle Strength (kg)	24(18-28)	40(30-60)	<0.001*
Muscle Mass (kg)	52.4(31.1-61.3)	51.1(29.3-70.5)	0.9642
SMMI %	40(26.6-62)	39(20.1-48.3)	0.1782
Upper arm circumference (cm)	20(15-41)	26(14-34)	<0.001*
Calf circumference (cm)	30(21-39)	32(21-39)	<0.001*
Up and go test	1(1-3)	1(1-4)	0.0442*
Hba1c (%4,7-%5,6)	10.4(6.5-15.3)	9.4(6.5-14.5)	0.0862
Glucose (70-100 mg/dL)	183(70-373)	190(69-372)	0.8552
Blood Urea Nitrogen (10-20 mg/dL)	31(15-51)	34(15-57)	0.2722
Creatinine (<1 mg/dl)	0.7(0.5-1.1)	0.7(0.5-1.1)	0.6512
C-reactive protein (<3mg/l)	9(0.2-23.4)	9(0.2-25)	0.8972
Total Cholesterol (<200 mg/dL)	240(107-356)	246(107-359)	0.7942
HDL (40–60 mg/dL)	31.5(5-43)	33(5-75)	0.9202
Triglyceride (<150 mg/dL)	138(60-305)	146(59-321)	0.8512
Leukocyte (4,1-8,9 10 ³ /ul)	9.4(3-15.3)	9(4-15.2)	0.9002
Hemoglobin (12,4-14,8 g/l)	14.4(10.58-17.7)	14.3(11.5-17.3)	0.2212
Platelet (15-450.000/mm ³)	183.5(101-485)	174(100-458)	0.8872

(BMI: Body mass index. SMMI index: Skeletal muscle mass index. HbA1C: Hemoglobin A1c. HDL: High-density lipoprotein cholesterol. LDL: Low-density lipoprotein cholesterol *Student t test)

4. Discussion

In this cross-sectional study of middle-aged men with T2DM, we investigated the possible relationship between dynapenia and NAFLD, and we detected a clear connection between dynapenia and NAFLD in this patient group. We found that the muscle strength decreased along with the increase of the NAFLD stage in these patients, and the NAFLD stage increased as the muscle strength decreased. The literature review suggested that our study is valuable because it is the first study on this subject in diabetic men. Patients with T2DM who had insulin resistance which was considered to occur similarly to NAFLD pathogenesis, were included in our study. Furthermore, women with different normal reference ranges of dynamometric measurements and younger men in whom dynapenia was not usually found were excluded from the study. A homogeneous and specific patient group was thereby created.

The number of patients with T2DM and NAFLD, commonly observed together, increases globally. NAFLD and T2DM occur with similar metabolic processes, and insulin resistance is considered an essential risk factor in developing both diseases (4). The interaction between the liver, muscle, and adipose tissue, in which insulin resistance is critical, plays a vital role in developing NAFLD (16). The skeletal muscle strongly affects glucose homeostasis and insulin resistance (17). There is a decrease in muscle mass, muscle strength, and function in patients with T2DM. Many studies have been conducted on sarcopenia; however, studies on dynapenia are still fresh. It has been shown that dynapenia poses a risk for functional limitations and mortality in older adults. Aging is closely associated with increased lipid accumulation in lean tissues and organs (7, 18). The liver is the main organ affected by ectopic fat accumulation. A significant association was found between increased body fat and dynapenia in patients with T2DM. It also shows that muscle weakness due to hyperglycemia may begin in the early stages of diabetes and at earlier

ages. The aging skeletal muscle and chronic hyperglycemia cause the accumulation of "advanced glycation and products" in the muscle, which is thought to reduce muscle strength and muscle mass in patients with T2DM (19). A previous study on the association between SMMI and hepatic steatosis in patients with T2DM reported that SMMI was negatively associated with hepatic steatosis in men with T2DM but not in women (20). A previous study revealed a reverse association between hand grip strength and insulin resistance and between the glucose level at 2nd hour in an oral glucose tolerance test (21). It was shown that hyperglycemia assessed by HbA1c in patients with T2DM is associated with dynapenia (22). Nishikawa H. et al. reported that dynapenic patients were more related to metabolic syndrome in patients with chronic liver disease than sarcopenic patients. In the same study, the frequency of dynapenia increases in patients with a fasting glucose level above 110 mg/dL. They concluded that insulin resistance might be related to muscle strength rather than muscle mass (23). Our study consisted of patients with T2DM; unlike the studies mentioned above, there was no significant difference between HbA1c averages and dynapenia, and the dynapenia prevalence increased along with the increase in the NAFLD stage, regardless of the HbA1c value. The mean HbA1c measured in the group with dynapenia was 10.4% and 9.4% in the group without dynapenia; However, the mean HbA1c was found to be higher in the dynapenia group, and no statistically significant difference was found between the two groups. Sarcopenia is more common in patients with lower BMI; however, it was reported that dynapenia is more common in patients with higher BMI, and it was reported that muscle disorders might be dynapenia in patients with T2DM rather than sarcopenia (17). Our study found no significant difference in BMI between dynapenic and non-dynapenic groups in patients with T2DM.

NAFLD was not detected in 25.2% of our patients through USG, whereas NAFLD of various grades was found in 74.8% of patients. Furthermore, 31.1% of our patients were dynapenic, and 68.9% were non-dynapenic. When the patients were compared according to NAFLD stages, there was a significant difference between the groups in muscle measurement parameters such as muscle strength, upper arm circumference, calf circumference, and the up-and-go test. We detected that arm and calf circumferences were higher in patients without steatosis; physical performance was better, and dynapenia prevalence was lower. Dynapenia was detected in 45.83% of patients with moderate NAFLD and 73.68% with severe NAFLD. Moreover, a significant decrease was observed in muscle strength measurements along with the increase in NAFLD stages. In other words, it was observed in our study that the incidence of dynapenia increased along with the rise in the NAFLD stage.

Similarly, long-term progressive resistance training and muscle strengthening training has been shown to stimulate muscle hypertrophy and type II muscle fiber growth, thus preventing or limiting dynapenia (24).

In our study, no significant difference was found regarding fasting glucose, HbA1c, and BMI in all stages of NAFLD; the details are presented in figure 2 (**Figure 2**). Most guidelines include efforts to reduce oxidative stress and improve insulin resistance and weight loss for the prevention and treatment of NAFLD as management of NAFLD. However, recent studies have shown the importance of maintaining and increasing muscle mass to prevent NAFLD (25).

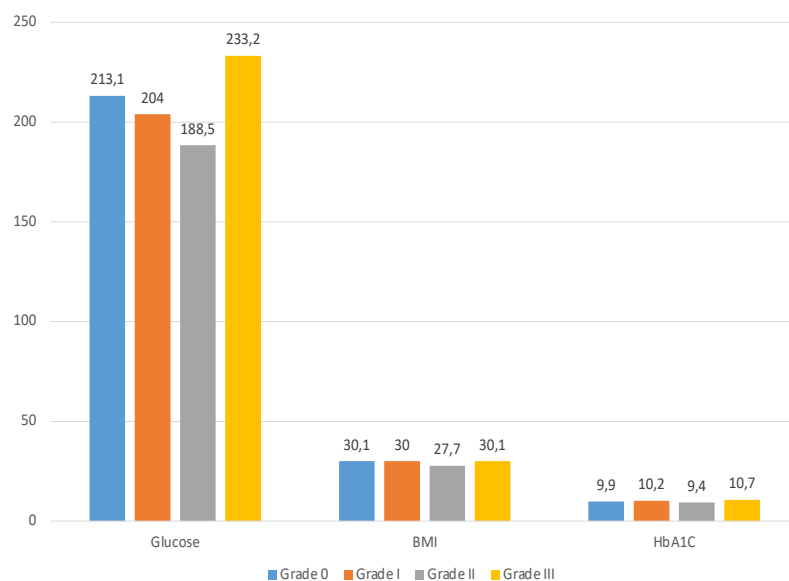


Figure 2. Fasting glucose (n=mg/dL), BMI (n=n) and HbA1c (n=%) measurements according to NAFLD stages. (NAFLD: Nonalcoholic fatty liver disease; BMI: Body mass index).

Our study had some limitations. Our work was done within a certain period. Thus, it was not quite a long observation period to establish a causal relationship for the significant association we found between dynapenia and NAFLD. Our study was single-center; therefore, our results may not represent all patients with T2DM. The patients included in our study were adult, middle-aged men; consequently, it is unclear whether our findings also apply to men and women in this age group. Despite these limitations, we believe that our study shows the relationship between NAFLD and dynapenia in middle-aged adult male T2DM patients and is a valuable study that has not been done before.

In conclusion, the results of our study revealed that maintaining adequate muscle strength in middle-aged male patients with T2DM may be an effective strategy to reduce the risk of NAFLD independent from fasting glucose, HbA1c, and BMI. However, further studies with more extensive series should be performed to support our hypothesis.

Abbreviations: NAFLD- Dynapenia and non-alcoholic fatty liver disease, T2DM- Type 2 Diabetes Mellitus, HbA1c-Hemoglobin A1 c.

Author Contributions: We declare that each author has made substantial contributions to the conception or design of the work; or the acquisition, analysis, or interpretation of data; or the creation of new software used in work; have drafted the work or substantively revised it; has approved the submitted version; agrees to be personally accountable for the author's contributions and for ensuring that questions related to the accuracy or integrity of any part of the work, even ones in which the author was not personally involved, are appropriately investigated, resolved, and documented in the literature.

Funding: This research received no specific grant from any funding agency in the public, commercial, or not-for-profit sectors. The authors received no financial support for this article's research and authorship.

Informed Consent Statement: Written consent was obtained from each patient to use their hospital data. The Ethics Board of Zeynep Kamil Women and Children Disease Training and Research Hospital obtained the study approval.

Data Availability Statement: The datasets generated during and/or analyzed during the current study are available from the corresponding author on reasonable request.

Acknowledgments: The authors wish to express their sincere gratitude for their cooperation to the staff of the Forest Service of Xanthi. This synergy contributed to a great extent to the implementation of the current research project. We hope that the research will contribute to the existing body of knowledge and raise awareness among forest managers. The authors also wish to thank Mrs. Malivitsi Zoe for editing the paper.

Conflicts of Interest: The authors declare no conflict of interest in preparing this article. The authors declared no conflicts of interest concerning the authorship and publication of this article. The authors have no commercial associations or sources of support that might pose a conflict of interest. The authors certify that they have no affiliation with or financial involvement in any organization or entity with a direct financial interest in the subject matter or materials discussed in the manuscript (e.g., employment, consultancies, stock ownership, and honoraria).

References

- Zheng Y, Ley SH, Hu FB. Global etiology and epidemiology of type 2 diabetes mellitus and its complications. *Nat Rev Endocrinol* 2018; 14 (2): 88-98.
- Younossi ZM, Stepanova M, Afendy M, Fang Y, Younossi Y, Mir H, et al. Changes in the prevalence of the most common causes of chronic liver diseases in the United States from 1988 to 2008. *Clin Gastroenterol Hepatol* 2011; 9 (6): 524-30.e1; quiz e60.
- Herath HMM, Kodikara I, Weeraratna TP, Liyanage G. Prevalence and associations of non-alcoholic fatty liver disease (NAFLD) in Sri Lankan patients with type 2 diabetes: A single-center study. *Diabetes Metab Syndr* 2019; 13 (1): 246-50.
- Tilg H, Moschen AR, Roden M. NAFLD and diabetes mellitus. *Nat Rev Gastroenterol Hepatol* 2017; 14 (1): 32-42.
- Clark BC, Manini TM. Sarcopenia \neq dynapenia. *J Gerontol A Biol Sci Med Sci* 2008; 63 (8): 829-34.
- Manini TM, Clark BC. Dynapenia and aging: an update. *J Gerontol A Biol Sci Med Sci* 2012; 67 (1): 28-40.
- Clark BC, Manini TM. What is dynapenia? *Nutrition* 2012; 28 (5): 495-503.
- Zhang Y, Lu D, Wang R, Fu W, Zhang S. Relationship between Muscle Mass/Strength and Hepatic Fat Content in Post-Menopausal Women. *Medicine (Kaunas)* 2019; 55 (10): 629.
2. Classification and Diagnosis of Diabetes: Standards of Medical Care in Diabetes-2020. *Diabetes Care* 2020; 43 (Suppl 1): S14-s31.
- Rubenstein LZ, Harker JO, Salvà A, Guigoz Y, Vellas B. Screening for undernutrition in geriatric practice: developing the short-form mini-nutritional assessment (MNA-SF). *J Gerontol A Biol Sci Med Sci* 2001; 56 (6): M366-72.
- Mathias S, Nayak US, Isaacs B. Balance in elderly patients: the "get-up and go" test. *Arch Phys Med Rehabil* 1986; 67 (6): 387-9.
- Newman DG, Pearn J, Barnes A, Young CM, Kehoe M, Newman J. Norms for hand grip strength. *Arch Dis Child* 1984; 59 (5): 453-9.
- Piazzolla VA, Mangia A. Noninvasive Diagnosis of NAFLD and NASH. *Cells* 2020; 9 (4).
- Ferraioli G, Soares Monteiro LB. Ultrasound-based techniques for the diagnosis of liver steatosis. *World J Gastroenterol* 2019; 25 (40): 6053-62.
- Idilman İS, Karçaaltıncaba M. Karaciğer yağlanması tanısında ve yağlanma miktarının belirlenmesinde radyolojik tanı yöntemleri. *Güncel Gastroenteroloji* 2014; 18 (112-118).
- Godoy-Matos AF, Silva Júnior WS, Valerio CM. NAFLD as a continuum: from obesity to metabolic syndrome and diabetes. *Diabetol Metab Syndr* 2020; 12: 60.
- Mori H, Kuroda A, Ishizu M, Ohishi M, Takashi Y, Otsuka Y, et al. Association of accumulated advanced glycation end-products with a high prevalence of sarcopenia and dynapenia in patients with type 2 diabetes. *J Diabetes Investig* 2019; 10 (5): 1332-40.
- Palikaras K, Mari M, Petanidou B, Pasparaki A, Filippidis G, Tavernarakis N. Ectopic fat deposition contributes to age-associated pathology in *Caenorhabditis elegans*. *J Lipid Res* 2017; 58 (1): 72-80.
- Sivritepe R. The Relationship Between Dynapenia and Vitamin D Level in Geriatric Women with Type 2 Diabetes Mellitus. *Northern Clinics of İstanbul*. Ahead of Print: NCI-28009.
- Hashimoto Y, Osaka T, Fukuda T, Tanaka M, Yamazaki M, Fukui M. The relationship between hepatic steatosis and skeletal muscle mass index in men with type 2 diabetes. *Endocr J* 2016; 63 (10): 877-84.
- Nomura T, Ikeda Y, Nakao S, Ito K, Ishida K, Suehiro T, et al. Muscle strength is a marker of insulin resistance in patients with type 2 diabetes: a pilot study. *Endocr J* 2007; 54 (5): 791-6.
- Li AA, Ahmed A, Kim D. Extrahepatic Manifestations of Nonalcoholic Fatty Liver Disease. *Gut Liver* 2020; 14 (2): 168-78.
- Nishikawa H, Yoh K, Enomoto H, Nishiguchi S, Iijima H. Dynapenia Rather Than Sarcopenia Is Associated with Metabolic Syndrome in Patients with Chronic Liver Diseases. *Diagnostics (Basel)* 2021; 11 (7): 1262.
- Nilwik R, Snijders T, Leenders M, Groen BB, Van Kranenburg J, Verdijk LB, et al. The decline in skeletal muscle mass with aging is mainly attributed to a reduction in type II muscle fiber size. *Exp Gerontol* 2013; 48 (5): 492-8.
- Hamaguchi M, Kojima T, Takeda N, Nakagawa T, Taniguchi H, Fujii K, et al. The metabolic syndrome as a predictor of non-alcoholic fatty liver disease. *Ann Intern Med* 2005; 143 (10): 722-8.