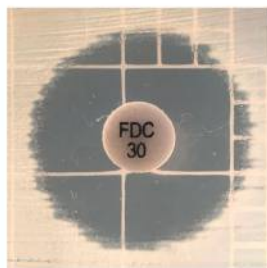


A)

AMA40
CFDC



AMA40
CFDC
+EDTA(0.5mmol/L)



AMA40 IHC1
CFDC

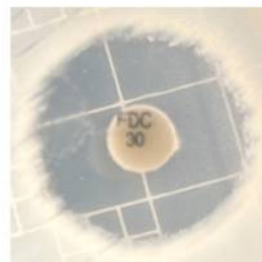


AMA40 IHC1
CFDC
+EDTA(0.5mmol/L)

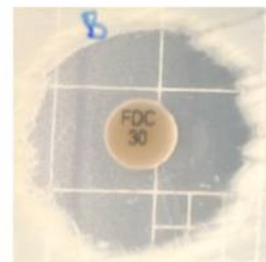


B)

AMA40
CFDC



AMA40
CFDC
+Boronic Acid



AMA40 IHC1
CFDC



AMA40 IHC1
CFDC
+Boronic Acid



AMA40 IHC2
CFDC



AMA40 IHC2
CFDC
+Boronic Acid

