

Certificate of Analysis
Secondary reference standard



Substance:	Eucalyptus oil	Specification no.:	1876
Article no:	0550-15-01		
Batch:	HWI01627-3		
Storage:	amber glass ampoule, storage at ambient temperature and under inert gas		
Expiry date ¹⁾ :	10/2022		

Parameter	Method*	Requirement	Result
Characters			
Appearance	organoleptic	colourless to slightly yellow liquid	complies
Identity (GC) ²⁾	AM0952	1,8-Cineole	complies
		α-Pinene	complies
		Limonene	complies
Assay (GC)			
1,8-Cineole	AM0952	---	823 mg/g

* valid version at time of testing

¹⁾ storage in unopened, original container according to specified conditions

²⁾ test only performed when substance is initially tested

checked and approved

12. NOV. 2020

Katharina Werling

Project leader
Laboratory Services

12. NOV. 2020

Stefanie Kempf

Project leader
Laboratory Services

Essential oil: Eucalyptus oil
Article-no.: 0550-15-01
Batch: HWI01627-3
Calibration standard: primary reference standard 1,8-Cineol

GC method (AM0952)

Column type: Supelcowax 10; 60 m x 0.25 mm; 0.25 µm
Carrier gas: Helium
Flow: 1.5 ml/min
Oven: 60 °C, 5 min, 5 °C/min, 200 °C, 5 min
Detector: 220 °C
Injector: 220 °C
Injection volume: 1 µL
Split: 1:50
Run time: 38 min

Internal standard solution

Transfer approx. 800 mg trans-Anethole into a 50.0 mL volumetric flask, dissolve in solvent and fill up to the mark with solvent.

Sample solution

Prepare two sample solutions from two different weighted portions.

Dissolve approx. 185 mg Eucalyptus oil in a 10.0 mL volumetric flask, dissolve in 5.0 mL internal standard solution and fill up to the mark with solvent.

Reference solution

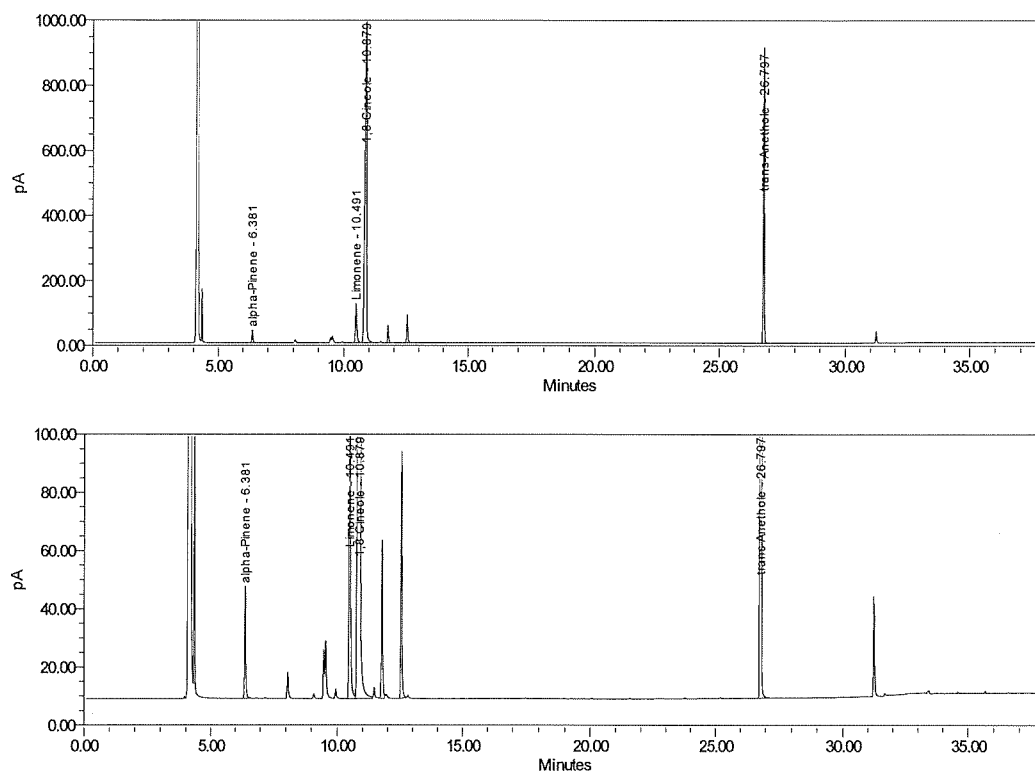
Prepare two reference solutions from two different weighted portions.

Transfer approx. 46.5 mg 1,8-Cineole into a 10.0 mL volumetric flask, dissolve in 5.0 mL internal standard solution and fill up to the mark with solvent.

Figure 1: Chromatogram of Eucalyptus oil, batch HWI01627-3

Eucalyptus oil

Batch_No HWI01627

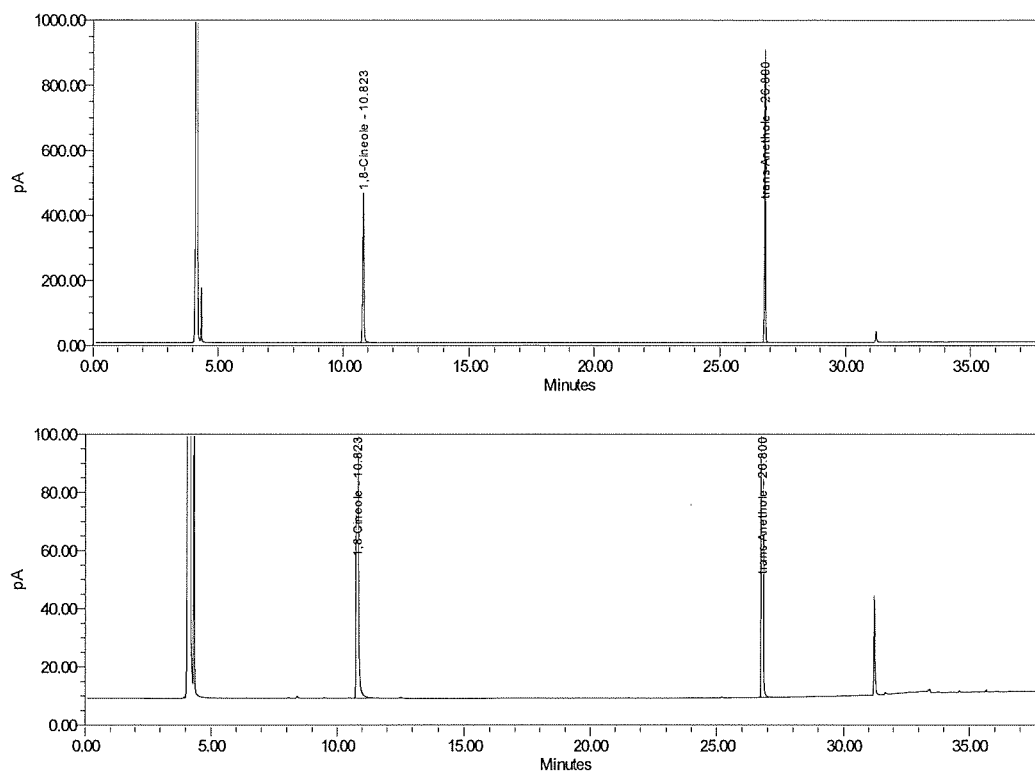


ELH20-02122-68; Eucalyptus oil; Batch_No HWI01627; Wednesday, October 28, 2020 8:45:48 PM CET;
Result Id 1286

Figure 2: Chromatogram of primary reference standard 1,8-Cineol, batch HWI00654

Reference solution 1

Batch_No



ELH20-02122-40; Reference solution 1; Batch_No ; Wednesday, October 28, 2020 2:56:16 PM CET;
Result Id 1316