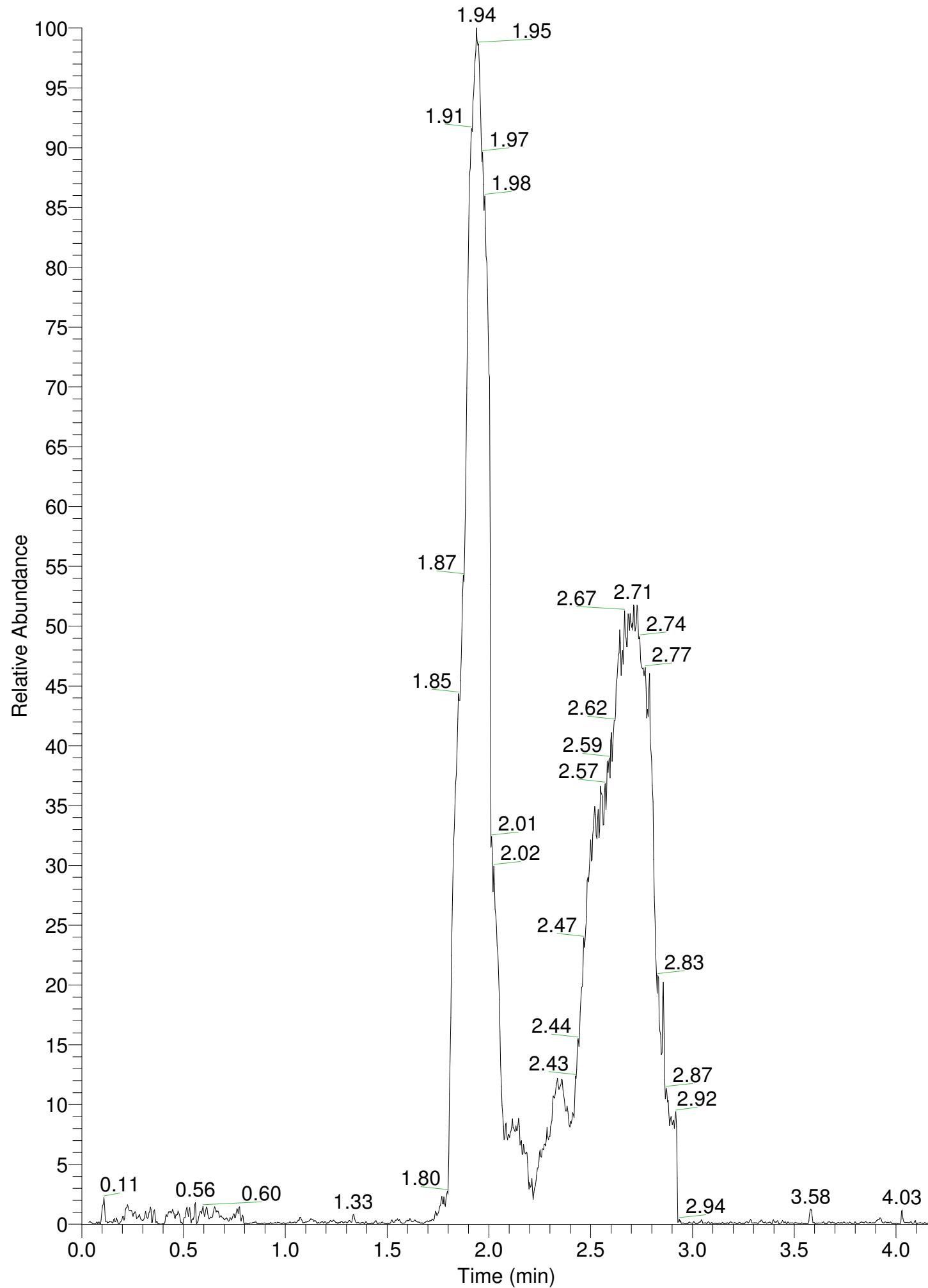


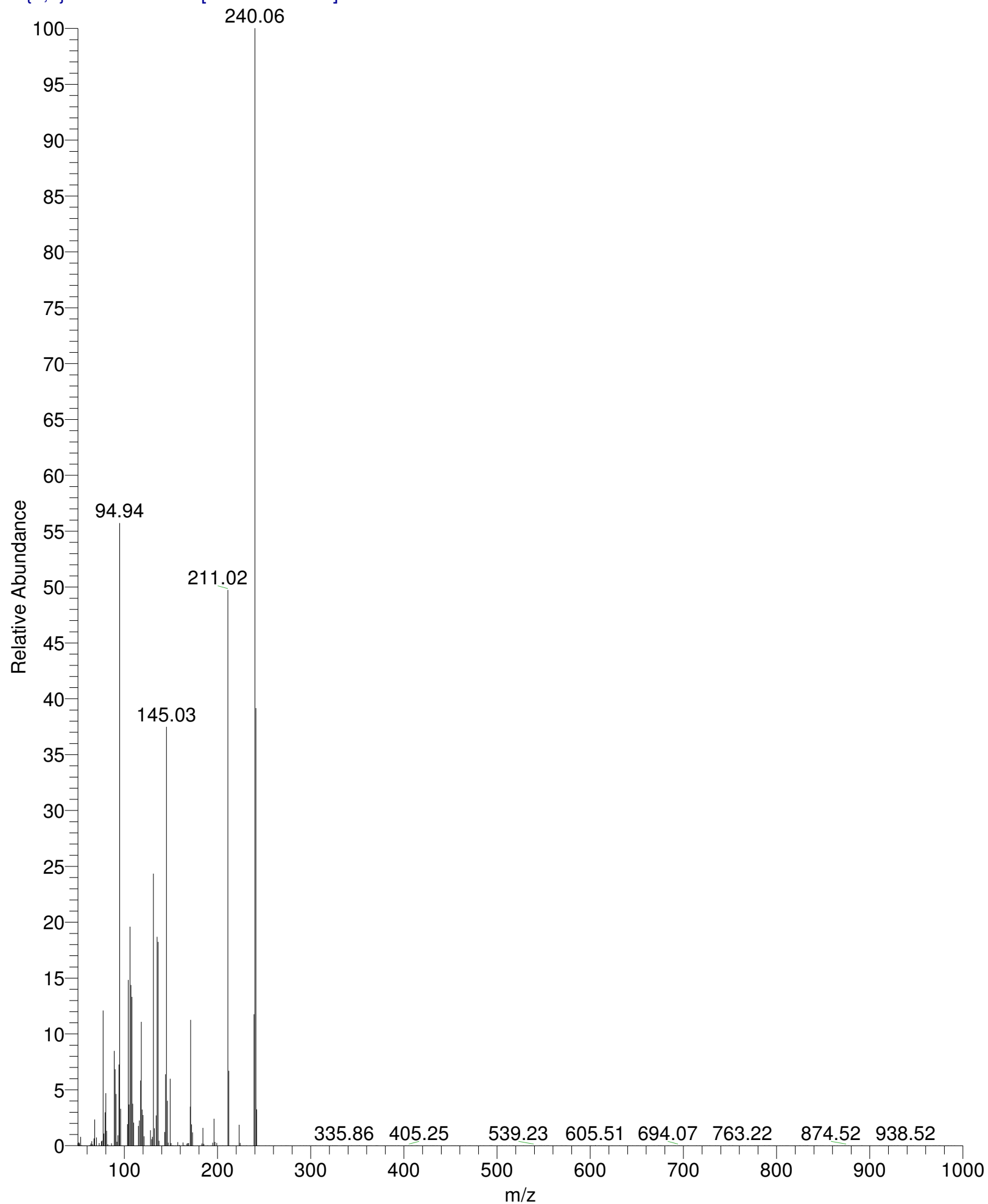
RT: 0.00 - 4.17

NL:
3.18E6
TIC MS
Selwan-44



Selwan-44 #744 RT: 2.56 AV: 1 NL: 1.83E5

T: {0,0} + c EI Full ms [50.00-1000.00]



Selwan-44#744 RT: 2.56

T: {0,0} + c EI Full ms [50.00-1000.00]

m/z= 50.00-1000.04

m/z	Intensity	Relative
50.04	401.5	0.22
51.05	527.5	0.29
51.80	381.2	0.21
52.94	1423.4	0.78
54.08	50.8	0.03
54.59	0.0	0.00
55.38	0.0	0.00
56.58	0.0	0.00
57.64	0.0	0.00
58.70	0.0	0.00
59.69	0.0	0.00
61.90	18.9	0.01
63.18	64.6	0.04
63.89	324.5	0.18
65.01	721.7	0.39
65.89	222.2	0.12
67.19	1154.1	0.63
68.06	4262.4	2.33
68.62	0.8	0.00
69.20	0.1	0.00
70.06	1316.5	0.72
72.26	0.0	0.00
72.88	411.8	0.22
74.11	0.0	0.00
74.66	0.0	0.00
75.26	689.9	0.38
76.14	830.3	0.45
77.04	22163.2	12.09
77.93	1954.4	1.07
79.10	5466.4	2.98
80.02	8571.8	4.68
80.95	2413.8	1.32
82.20	209.7	0.11
83.34	0.2	0.00
83.89	0.2	0.00
86.11	359.7	0.20
86.76	0.1	0.00
87.99	0.1	0.00
89.01	15525.3	8.47
89.99	12512.1	6.83
91.00	8466.9	4.62
91.87	637.0	0.35
93.03	1667.6	0.91
94.02	13300.9	7.26
94.94	102097.6	55.71
96.01	6043.3	3.30
96.83	0.0	0.00
97.53	0.2	0.00
102.07	16.8	0.01
103.17	3513.6	1.92
104.00	27171.5	14.83
104.97	6744.3	3.68
105.98	35907.6	19.59
107.03	26349.4	14.38
107.99	24379.1	13.30

Selwan-44#744 RT: 2.56

T: {0,0} + c EI Full ms [50.00-1000.00]

m/z= 50.00-1000.04

m/z	Intensity	Relative
108.99	6868.8	3.75
110.04	3750.8	2.05
111.04	0.1	0.00
112.83	0.0	0.00
113.64	0.0	0.00
115.06	3214.6	1.75
116.04	4112.4	2.24
117.16	10661.7	5.82
118.05	20301.2	11.08
118.95	5896.8	3.22
119.97	5009.7	2.73
121.01	1531.1	0.84
125.25	0.0	0.00
127.98	2497.9	1.36
129.15	1040.5	0.57
130.05	1409.9	0.77
131.01	44591.6	24.33
132.03	2815.5	1.54
132.93	0.0	0.00
134.10	4950.7	2.70
135.01	34224.5	18.67
135.99	33405.1	18.23
137.03	781.4	0.43
138.06	0.3	0.00
140.44	0.0	0.00
141.44	0.0	0.00
142.23	21.0	0.01
143.25	2229.9	1.22
144.13	11677.4	6.37
145.03	68674.3	37.47
146.05	7329.0	4.00
146.89	464.7	0.25
148.35	2.2	0.00
149.04	10942.0	5.97
150.13	384.8	0.21
151.62	38.1	0.02
152.48	0.0	0.00
152.99	0.1	0.00
154.29	0.0	0.00
155.21	12.0	0.01
155.96	1.9	0.00
157.20	559.6	0.31
158.06	0.0	0.00
158.90	83.9	0.05
159.95	0.0	0.00
161.07	30.9	0.02
162.86	500.6	0.27
163.41	0.9	0.00
164.45	43.2	0.02
165.14	1.5	0.00
166.07	17.1	0.01
167.08	318.4	0.17
167.87	410.5	0.22
168.86	403.1	0.22
170.58	6377.7	3.48

Selwan-44#744 RT: 2.56

T: {0,0} + c EI Full ms [50.00-1000.00]

m/z= 50.00-1000.04

m/z	Intensity	Relative
171.10	20627.8	11.26
172.12	3462.0	1.89
173.06	2167.3	1.18
173.98	0.0	0.00
178.47	0.0	0.00
181.16	0.1	0.00
182.07	0.0	0.00
183.07	337.3	0.18
184.15	2906.8	1.59
185.19	262.0	0.14
189.12	0.0	0.00
189.73	0.0	0.00
192.81	0.0	0.00
193.55	0.1	0.00
194.74	448.1	0.24
196.11	4384.8	2.39
197.21	604.8	0.33
198.09	0.0	0.00
199.15	437.9	0.24
200.20	0.0	0.00
201.78	0.0	0.00
202.90	0.0	0.00
204.41	0.0	0.00
205.44	0.0	0.00
206.26	0.0	0.00
208.04	0.0	0.00
209.45	0.1	0.00
211.02	91145.3	49.73
212.05	12256.3	6.69
213.20	1.5	0.00
216.35	0.0	0.00
221.10	0.0	0.00
223.03	3415.5	1.86
224.09	428.4	0.23
225.12	0.0	0.00
228.03	0.0	0.00
230.63	0.1	0.00
231.29	0.0	0.00
234.98	0.0	0.00
237.89	0.0	0.00
239.06	21533.8	11.75
240.06	183266.9	100.00
241.09	71761.7	39.16
242.05	5918.6	3.23
242.63	0.3	0.00
243.90	0.2	0.00
244.72	0.0	0.00
251.67	0.0	0.00
255.34	0.0	0.00
261.27	0.0	0.00
268.25	0.0	0.00
272.93	0.0	0.00
273.93	0.0	0.00
275.67	0.0	0.00
288.92	0.0	0.00

Selwan-44#744 RT: 2.56

T: {0,0} + c EI Full ms [50.00-1000.00]

m/z= 50.00-1000.04

m/z	Intensity	Relative
292.32	0.0	0.00
295.08	0.0	0.00
298.69	0.0	0.00
301.18	0.0	0.00
302.33	0.0	0.00
304.41	0.0	0.00
305.57	0.0	0.00
310.17	0.0	0.00
312.77	0.0	0.00
315.93	0.0	0.00
317.42	0.0	0.00
318.92	0.0	0.00
320.28	0.0	0.00
321.01	0.0	0.00
323.08	0.0	0.00
324.03	0.0	0.00
325.56	0.0	0.00
326.90	0.0	0.00
328.23	0.0	0.00
333.52	0.0	0.00
334.86	0.0	0.00
335.86	0.1	0.00
336.48	0.0	0.00
337.75	0.0	0.00
340.29	0.0	0.00
343.55	0.0	0.00
349.61	0.0	0.00
351.79	0.0	0.00
352.39	0.0	0.00
360.01	0.0	0.00
361.68	0.0	0.00
362.97	0.0	0.00
364.56	0.0	0.00
369.76	0.0	0.00
370.31	0.0	0.00
371.02	0.0	0.00
372.13	0.0	0.00
378.95	0.0	0.00
381.87	0.0	0.00
383.70	0.0	0.00
386.01	0.0	0.00
388.09	0.0	0.00
390.69	0.0	0.00
393.64	0.0	0.00
394.60	0.0	0.00
401.14	0.0	0.00
401.73	0.0	0.00
402.69	0.0	0.00
404.49	0.0	0.00
405.25	0.0	0.00
407.43	0.0	0.00
408.18	0.0	0.00
408.91	0.0	0.00
413.11	0.0	0.00
414.12	0.0	0.00

Selwan-44#744 RT: 2.56

T: {0,0} + c EI Full ms [50.00-1000.00]

m/z= 50.00-1000.04

m/z	Intensity	Relative
415.06	0.0	0.00
422.72	0.0	0.00
424.61	0.0	0.00
428.63	0.0	0.00
430.57	0.0	0.00
432.03	0.0	0.00
435.52	0.0	0.00
439.67	0.0	0.00
442.69	0.0	0.00
451.64	0.0	0.00
453.60	0.0	0.00
455.56	0.0	0.00
457.71	0.0	0.00
458.99	0.0	0.00
460.90	0.0	0.00
463.27	0.0	0.00
466.15	0.0	0.00
470.04	0.0	0.00
471.50	0.0	0.00
478.10	0.0	0.00
481.82	0.0	0.00
485.41	0.0	0.00
491.93	0.0	0.00
493.25	0.0	0.00
494.10	0.0	0.00
494.64	0.0	0.00
500.59	0.0	0.00
502.73	0.0	0.00
505.30	0.0	0.00
510.03	0.0	0.00
513.31	0.0	0.00
516.79	0.0	0.00
517.56	0.0	0.00
518.40	0.0	0.00
528.36	0.0	0.00
535.19	0.0	0.00
536.75	0.0	0.00
539.23	0.0	0.00
540.51	0.0	0.00
545.14	0.0	0.00
546.29	0.0	0.00
547.74	0.0	0.00
550.84	0.0	0.00
553.24	0.0	0.00
554.33	0.0	0.00
555.22	0.0	0.00
559.71	0.0	0.00
564.00	0.0	0.00
568.62	0.0	0.00
569.87	0.0	0.00
573.31	0.0	0.00
574.44	0.0	0.00
581.79	0.0	0.00
587.44	0.0	0.00
596.36	0.0	0.00

Selwan-44#744 RT: 2.56

T: {0,0} + c EI Full ms [50.00-1000.00]

m/z= 50.00-1000.04

m/z	Intensity	Relative
597.98	0.0	0.00
599.85	0.0	0.00
600.65	0.2	0.00
601.71	0.0	0.00
603.81	0.0	0.00
605.51	43.5	0.02
608.87	0.0	0.00
609.69	0.0	0.00
611.79	0.0	0.00
614.60	0.0	0.00
616.49	0.0	0.00
619.94	0.0	0.00
623.25	0.0	0.00
631.43	0.0	0.00
637.84	0.0	0.00
640.87	0.0	0.00
642.44	0.0	0.00
645.59	0.0	0.00
649.88	0.0	0.00
651.68	0.0	0.00
653.91	0.0	0.00
661.30	0.0	0.00
662.91	0.0	0.00
668.52	0.0	0.00
673.02	0.0	0.00
673.54	0.0	0.00
675.23	0.0	0.00
675.87	0.0	0.00
683.20	0.0	0.00
684.01	0.0	0.00
689.74	0.0	0.00
691.24	0.0	0.00
694.07	0.1	0.00
695.09	0.0	0.00
695.77	0.0	0.00
696.29	0.0	0.00
697.56	0.0	0.00
698.68	0.0	0.00
704.44	0.0	0.00
705.43	0.0	0.00
713.90	0.0	0.00
717.42	0.0	0.00
721.62	0.0	0.00
723.59	0.0	0.00
724.77	0.0	0.00
726.03	0.0	0.00
727.77	0.0	0.00
728.59	0.0	0.00
734.41	0.0	0.00
737.17	0.0	0.00
743.06	0.0	0.00
745.30	0.0	0.00
748.93	0.0	0.00
749.58	0.0	0.00
752.40	0.0	0.00

Selwan-44#744 RT: 2.56

T: {0,0} + c EI Full ms [50.00-1000.00]

m/z= 50.00-1000.04

m/z	Intensity	Relative
753.13	0.0	0.00
763.22	0.1	0.00
766.16	0.0	0.00
771.59	0.0	0.00
776.35	0.0	0.00
778.31	0.0	0.00
779.69	0.0	0.00
780.92	0.0	0.00
787.20	0.0	0.00
791.33	0.0	0.00
792.89	0.0	0.00
796.21	0.0	0.00
797.67	0.0	0.00
799.15	0.0	0.00
803.61	0.1	0.00
806.34	0.0	0.00
809.82	0.0	0.00
810.98	0.0	0.00
812.54	0.0	0.00
819.26	0.0	0.00
824.23	0.0	0.00
824.83	0.0	0.00
825.36	0.0	0.00
828.59	0.0	0.00
830.66	0.0	0.00
831.96	0.0	0.00
833.09	0.0	0.00
833.63	0.0	0.00
840.76	0.0	0.00
842.90	0.0	0.00
843.46	0.0	0.00
847.50	0.0	0.00
849.63	0.0	0.00
856.35	0.0	0.00
860.26	0.0	0.00
861.96	0.0	0.00
865.17	0.0	0.00
870.64	0.0	0.00
872.52	0.0	0.00
873.06	0.0	0.00
873.91	0.0	0.00
874.52	0.0	0.00
876.67	0.0	0.00
877.49	0.0	0.00
881.72	0.0	0.00
891.27	0.0	0.00
891.84	0.0	0.00
899.53	0.0	0.00
900.80	0.0	0.00
910.35	0.0	0.00
915.49	0.0	0.00
917.88	0.0	0.00
920.51	0.0	0.00
921.59	0.0	0.00
923.54	0.0	0.00

Selwan-44#744 RT: 2.56

T: {0,0} + c EI Full ms [50.00-1000.00]

m/z= 50.00-1000.04

m/z	Intensity	Relative
926.63	0.0	0.00
929.46	0.0	0.00
930.42	0.0	0.00
933.25	0.0	0.00
936.59	0.0	0.00
938.52	0.1	0.00
939.39	0.0	0.00
941.02	0.0	0.00
944.01	0.0	0.00
946.49	0.0	0.00
954.47	0.0	0.00
958.71	0.0	0.00
961.35	0.1	0.00
964.87	0.0	0.00
968.08	0.0	0.00
969.92	0.0	0.00
971.35	0.0	0.00
973.72	0.0	0.00
975.09	0.0	0.00
975.66	0.0	0.00
981.80	0.0	0.00
983.61	0.0	0.00
984.74	0.0	0.00
987.28	0.0	0.00
990.96	0.0	0.00
997.92	0.0	0.00