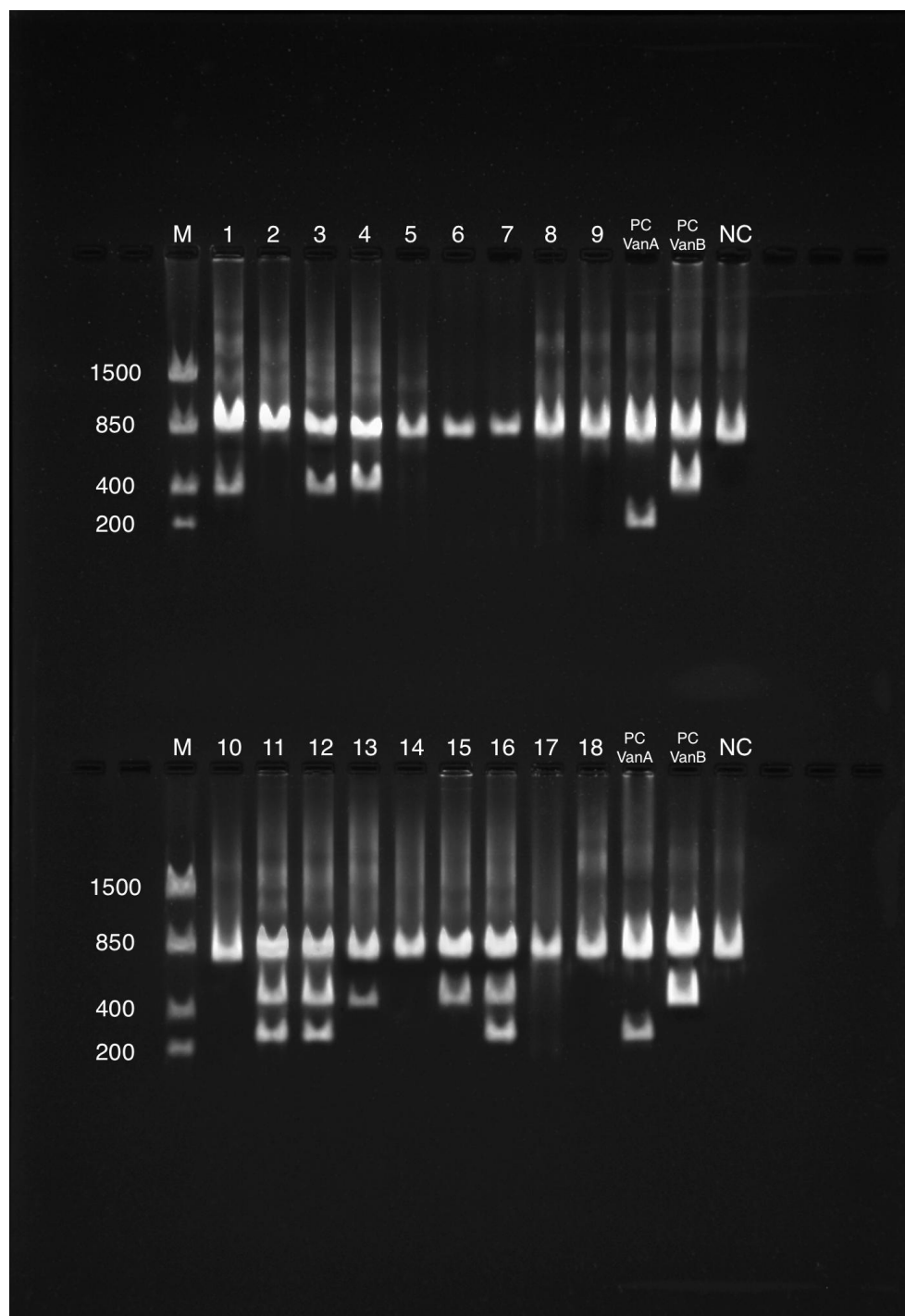


## The scope of antibiotic resistance genes in sewages of Rostov-on-Don and lower Don River



**Figure S10.** Agarose gel electrophoresis of PCR-amplified VanA and VanB genes in wastewater samples.

Lanes: M – mol. weight marker; 1 – sample 31; 2 – sample 32; 3 – sample 33; 4 – sample 34; 5 – sample 35; 6 – sample 36; 7 – sample 37; 8 – sample 38; 9 – sample 39; 10 – sample 40; 11 – sample 41; 12 – sample 42; 13 – sample 43; 14 – sample 44; 15 – sample 45; 16 – sample 46; 17 – sample 47; 18 – sample 48; PC VanA – VanA positive control (256 b.p.); PC VanB – VanB positive control (427 b.p.); NC – negative control.