

Bacteria_AutoXecute_water-hexane_normalization by 421.17

Experiment Name: Bacteria_AutoXecute_water

Experiment Design

Group	Rhizobium leguminosarum bv. viciae RCAM1026	Sinorhizobium meliloti RCAM1021
Replicates	4	4

Spectra	Sample	Group
Rh.leg.RCAM2016_1-1-1	Rhizobium leguminosarum bv. viciae RCAM1026_1	Rhizobium leguminosarum bv. viciae RCAM1026
Rh.leg.RCAM2016_1-1-2	Rhizobium leguminosarum bv. viciae RCAM1026_1	Rhizobium leguminosarum bv. viciae RCAM1026
Rh.leg.RCAM2016_1-1-3	Rhizobium leguminosarum bv. viciae RCAM1026_1	Rhizobium leguminosarum bv. viciae RCAM1026
Rh.leg.RCAM2016_1-2-1	Rhizobium leguminosarum bv. viciae RCAM1026_1	Rhizobium leguminosarum bv. viciae RCAM1026
Rh.leg.RCAM2016_1-2-2	Rhizobium leguminosarum bv. viciae RCAM1026_1	Rhizobium leguminosarum bv. viciae RCAM1026
Rh.leg.RCAM2016_1-2-3	Rhizobium leguminosarum bv. viciae RCAM1026_1	Rhizobium leguminosarum bv. viciae RCAM1026
Rh.leg.RCAM2016_1-3-1	Rhizobium leguminosarum bv. viciae RCAM1026_1	Rhizobium leguminosarum bv. viciae RCAM1026
Rh.leg.RCAM2016_1-3-2	Rhizobium leguminosarum bv. viciae RCAM1026_1	Rhizobium leguminosarum bv. viciae RCAM1026
Rh.leg.RCAM2016_1-3-3	Rhizobium leguminosarum bv. viciae RCAM1026_1	Rhizobium leguminosarum bv. viciae RCAM1026
Rh.leg.RCAM2016_2-1-1	Rhizobium leguminosarum bv. viciae RCAM1026_2	Rhizobium leguminosarum bv. viciae RCAM1026
Rh.leg.RCAM2016_2-1-2	Rhizobium leguminosarum bv. viciae RCAM1026_2	Rhizobium leguminosarum bv. viciae RCAM1026
Rh.leg.RCAM2016_2-1-3	Rhizobium leguminosarum bv. viciae RCAM1026_2	Rhizobium leguminosarum bv. viciae RCAM1026
Rh.leg.RCAM2016_2-2-1	Rhizobium leguminosarum bv. viciae RCAM1026_2	Rhizobium leguminosarum bv. viciae RCAM1026
Rh.leg.RCAM2016_2-2-2	Rhizobium leguminosarum bv. viciae RCAM1026_2	Rhizobium leguminosarum bv. viciae RCAM1026
Rh.leg.RCAM2016_2-2-3	Rhizobium leguminosarum bv. viciae RCAM1026_2	Rhizobium leguminosarum bv. viciae RCAM1026
Rh.leg.RCAM2016_2-3-1	Rhizobium leguminosarum bv. viciae RCAM1026_2	Rhizobium leguminosarum bv. viciae RCAM1026
Rh.leg.RCAM2016_2-3-2	Rhizobium leguminosarum bv. viciae RCAM1026_2	Rhizobium leguminosarum bv. viciae RCAM1026
Rh.leg.RCAM2016_2-3-3	Rhizobium leguminosarum bv. viciae RCAM1026_2	Rhizobium leguminosarum bv. viciae RCAM1026
Rh.leg.RCAM2016_3-1-1	Rhizobium leguminosarum bv. viciae RCAM1026_3	Rhizobium leguminosarum bv. viciae RCAM1026
Rh.leg.RCAM2016_3-1-2	Rhizobium leguminosarum bv. viciae RCAM1026_3	Rhizobium leguminosarum bv. viciae RCAM1026
Rh.leg.RCAM2016_3-1-3	Rhizobium leguminosarum bv. viciae RCAM1026_3	Rhizobium leguminosarum bv. viciae RCAM1026
Rh.leg.RCAM2016_3-2-1	Rhizobium leguminosarum bv. viciae RCAM1026_3	Rhizobium leguminosarum bv. viciae RCAM1026
Rh.leg.RCAM2016_3-2-2	Rhizobium leguminosarum bv. viciae RCAM1026_3	Rhizobium leguminosarum bv. viciae RCAM1026
Rh.leg.RCAM2016_3-2-3	Rhizobium leguminosarum bv. viciae RCAM1026_3	Rhizobium leguminosarum bv. viciae RCAM1026
Rh.leg.RCAM2016_3-3-1	Rhizobium leguminosarum bv. viciae RCAM1026_3	Rhizobium leguminosarum bv. viciae RCAM1026
Rh.leg.RCAM2016_3-3-2	Rhizobium leguminosarum bv. viciae RCAM1026_3	Rhizobium leguminosarum bv. viciae RCAM1026

[illegible]

Statistics Measurement: Normalized Peak Height

Normalization Method: Single Peak Height 421.17 m/z

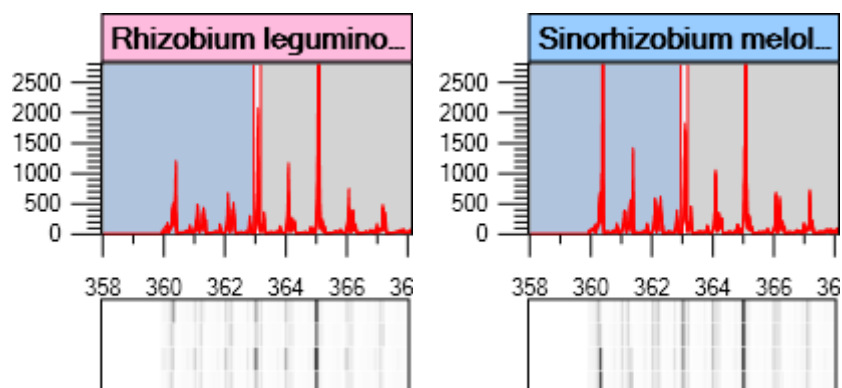
Peaks

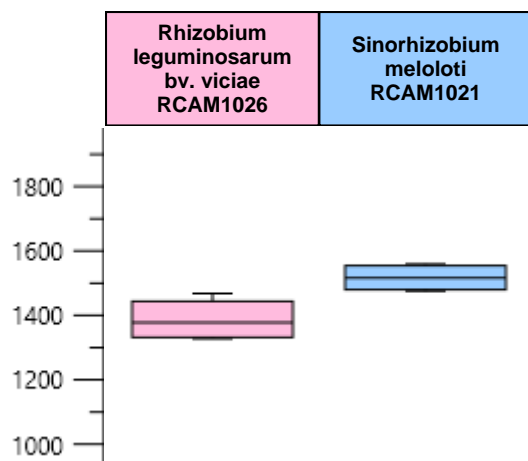
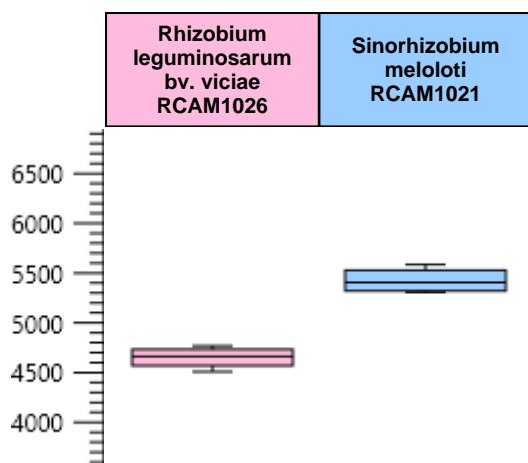
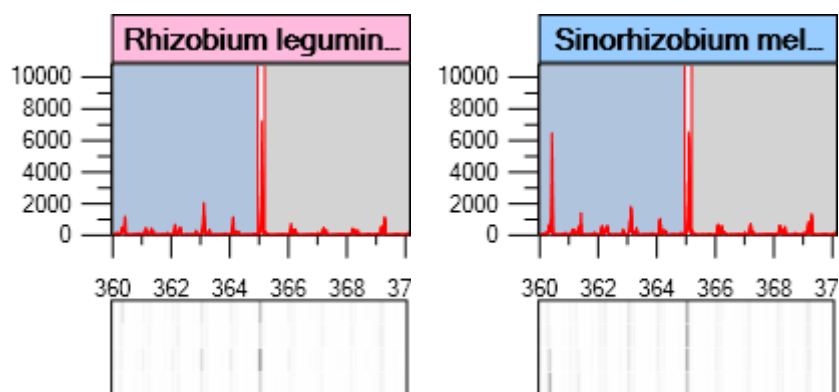
#	m/z	Fold	Anova (p)	Tags
3	363.10	1.09	0.015	
4	365.11	1.17	7.55E-05	
10	377.11	1.10	0.0275	
12	379.12	1.14	0.00342	
23	391.12	1.06	0.00172	
25	393.14	1.00	1	
43	417.14	1.04	0.173	
47	419.15	1.04	0.187	
50	421.17	1.00	1	

Peaks : Average Normalized Peak Heights

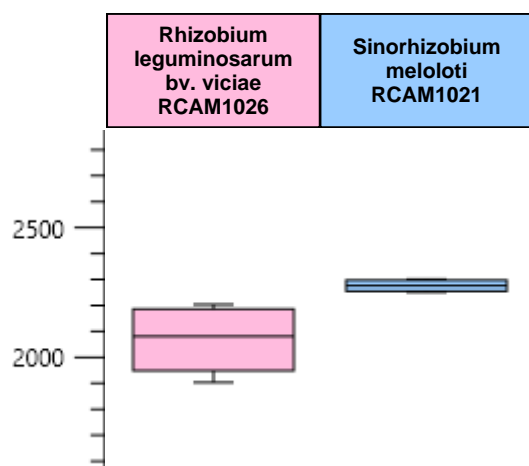
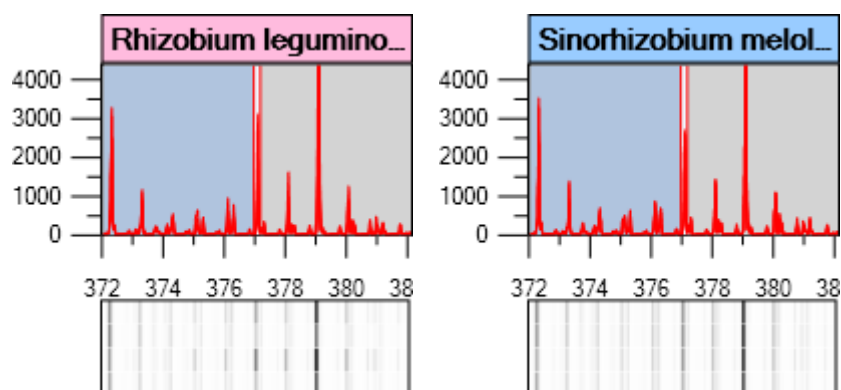
#	Rhizobium leguminosarum bv. viciae RCAM1026	Sinorhizobium meliloti RCAM1021
3	1387.725	1516.819
4	4651.020	5425.327
10	2067.367	2276.266
12	7042.831	8008.104
23	2.596e+004	2.760e+004
25	4.136e+004	4.143e+004
43	2.745e+004	2.634e+004
47	8.030e+004	7.737e+004
50	1.274e+005	1.274e+005

Identifier 3: m/z 363.10

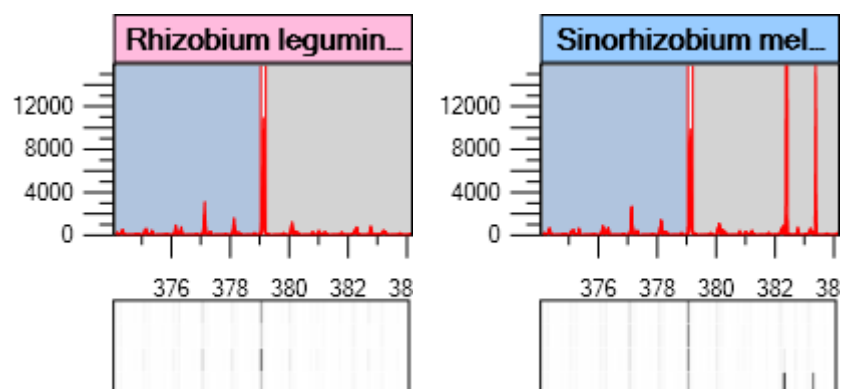


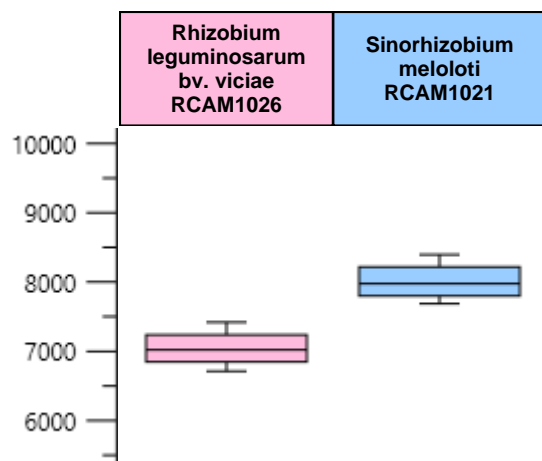
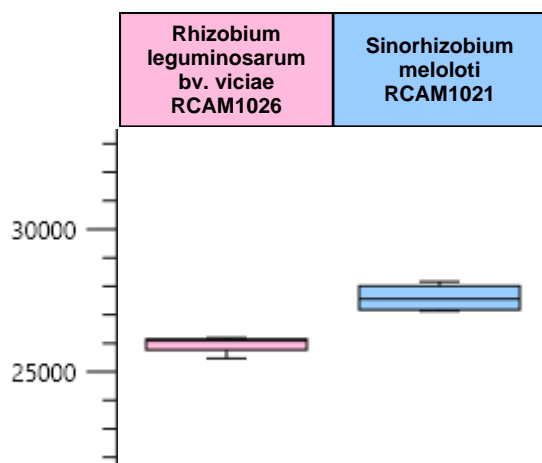
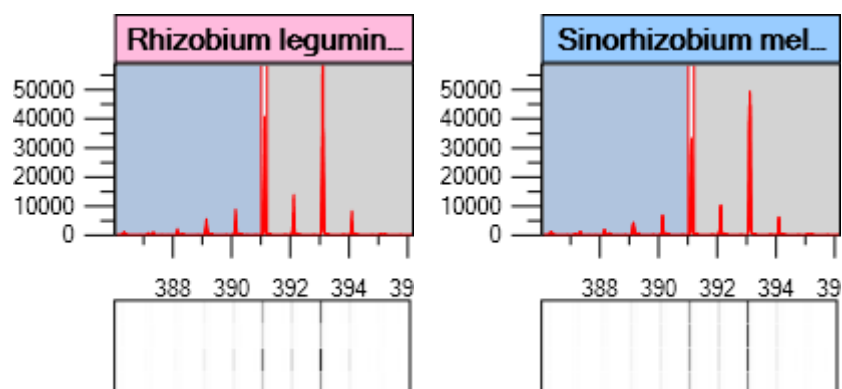
**Identifier 4: m/z 365.11**

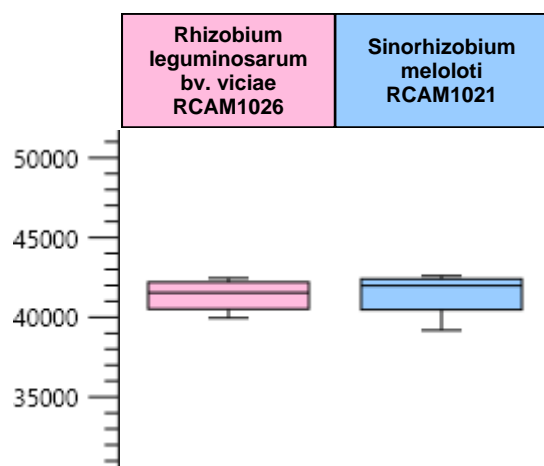
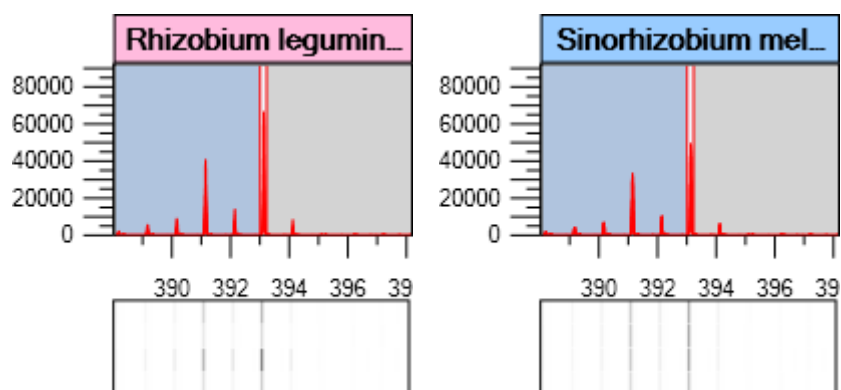
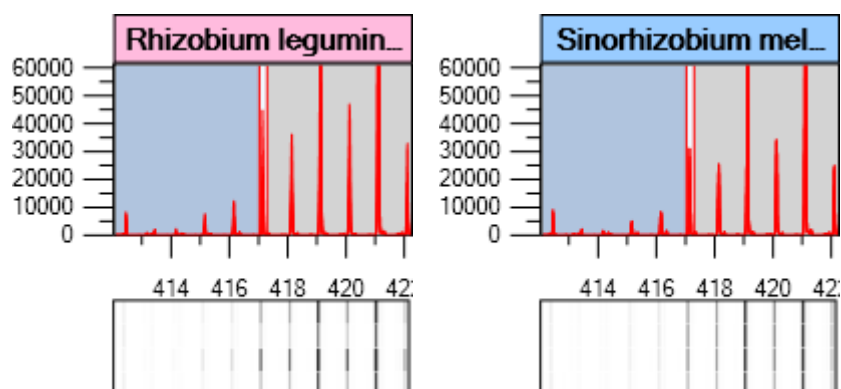
Identifier 10: m/z 377.11

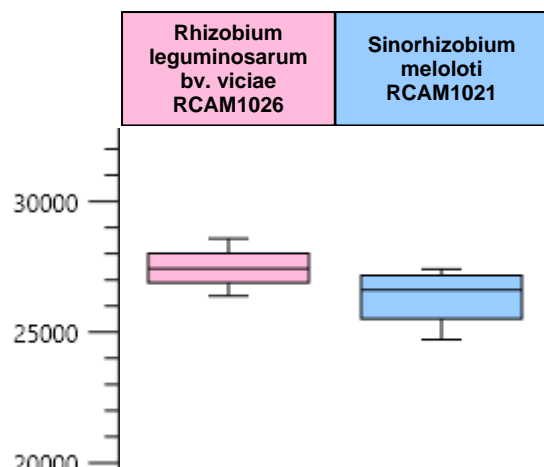


Identifier 12: m/z 379.12

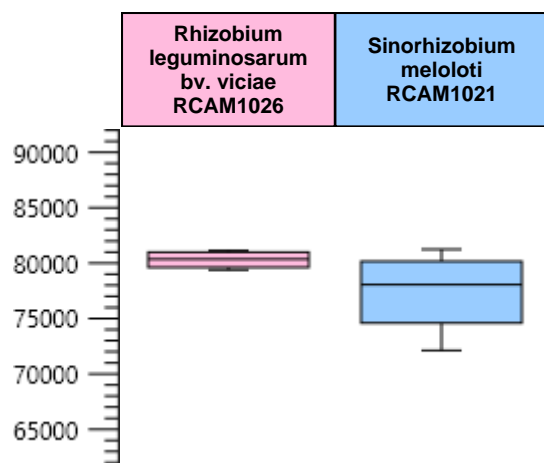
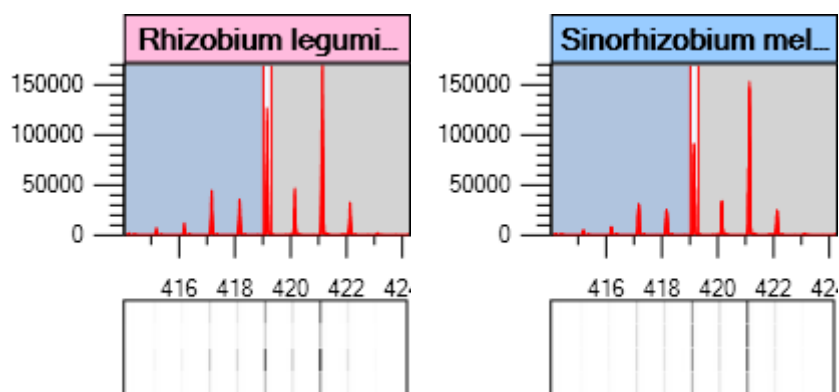


**Identifier 23: m/z 391.12**

Identifier 25: m/z 393.14**Identifier 43: m/z 417.14**



Identifier 47: m/z 419.15



Identifier 50: m/z 421.17

