

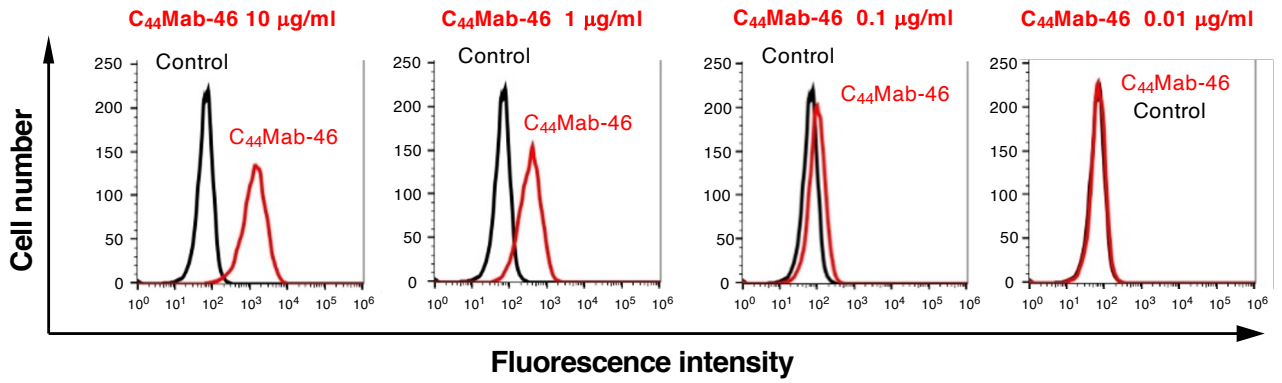
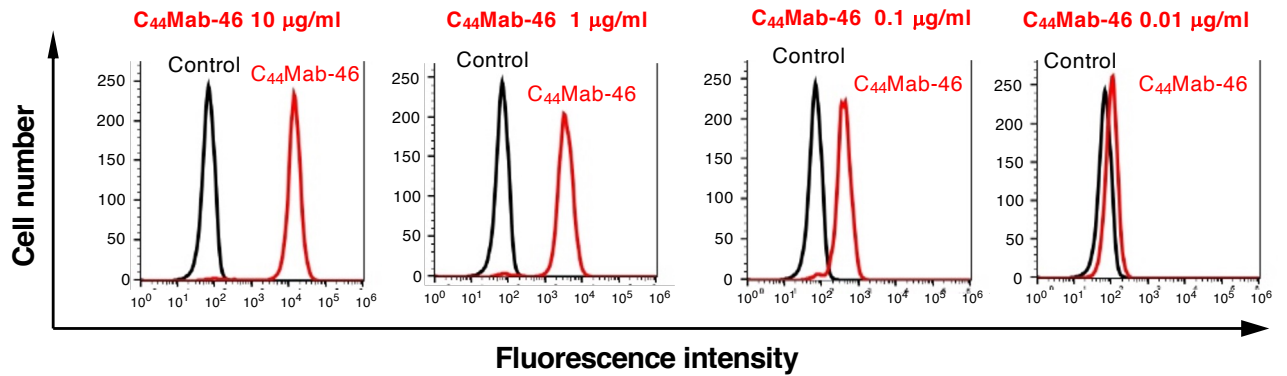
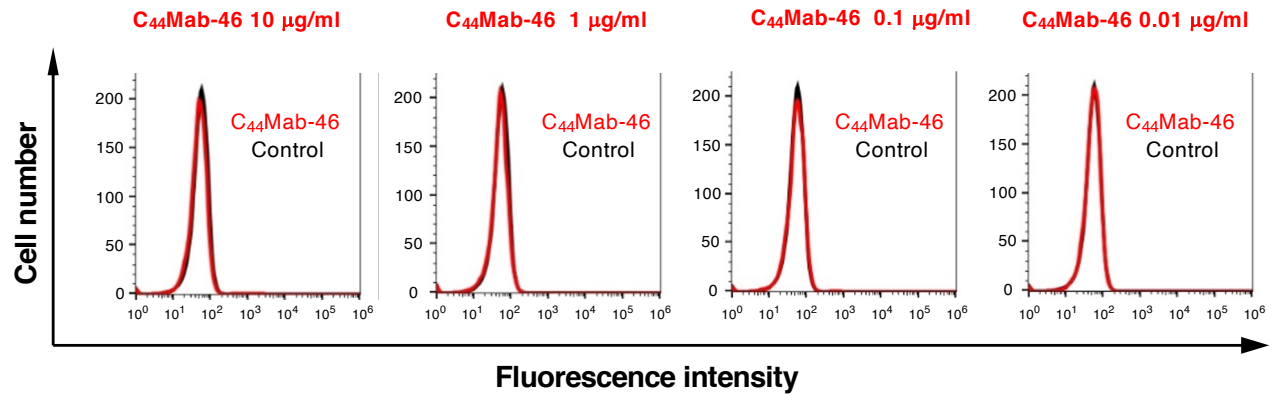
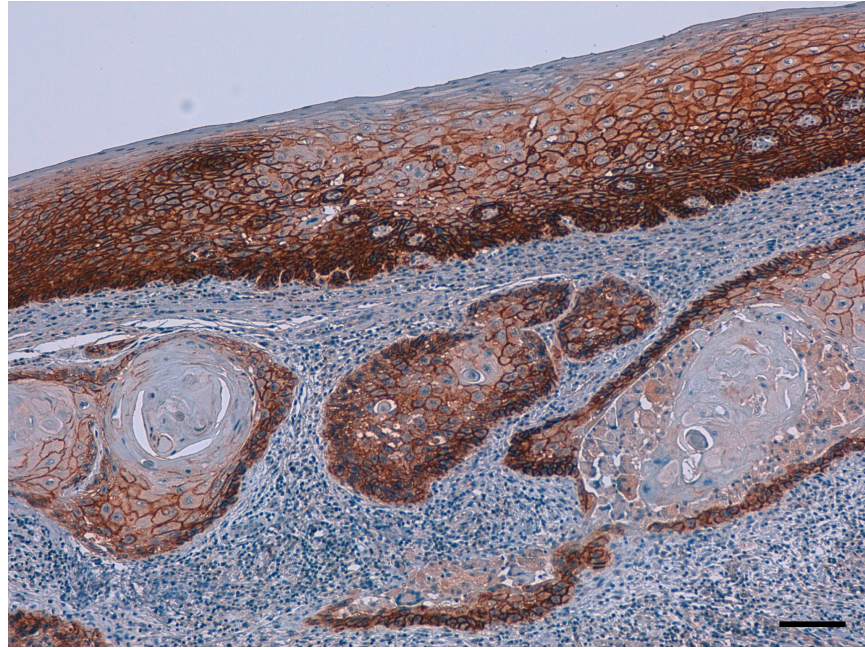
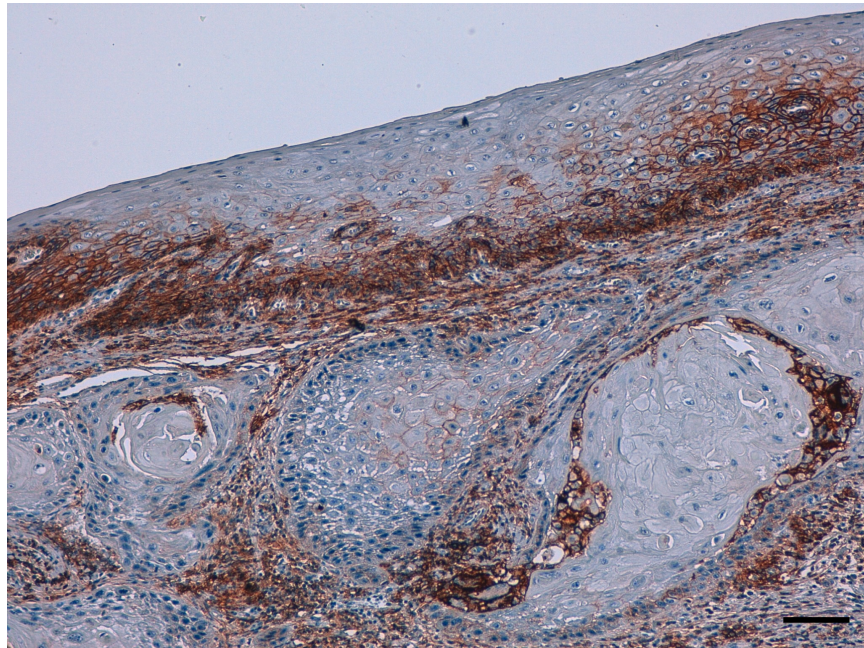
A**CHO/CD44v3-10****B****CHO/CD44s****C****CHO-K1**

Figure S1 Conformation of the recognition of CHO/CD44s and CHO/CD44v3-10 by C₄₄Mab-46 by flow cytometry. CHO/CD44v3-10 (A), CHO/CD44s (B), and CHO-K1 (C) were treated with 0.01-10 µg/mL of C₄₄Mab-46, followed by treatment with Alexa Fluor 488-conjugated anti-mouse IgG (Red line). The black line represents the negative control (blocking buffer).

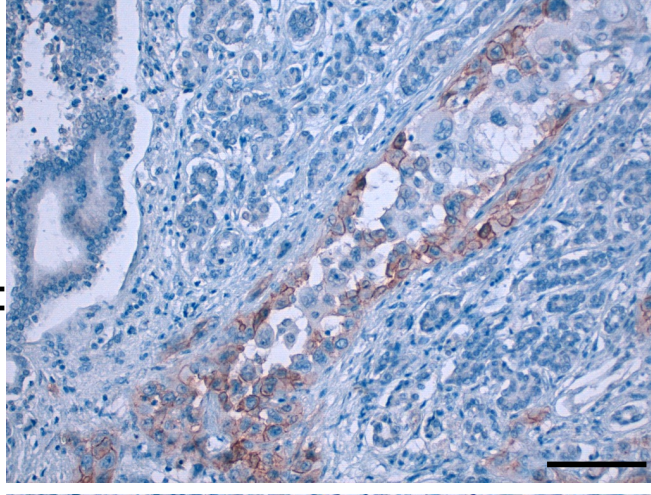
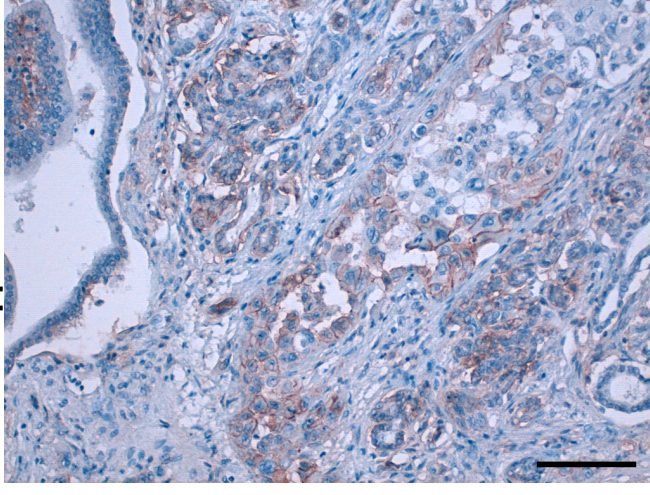
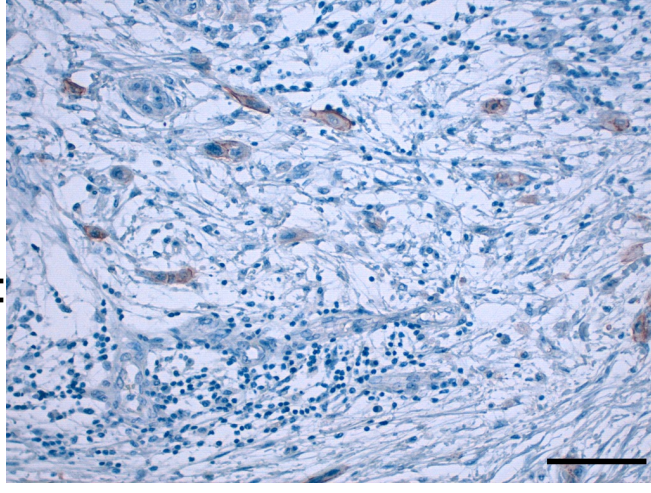
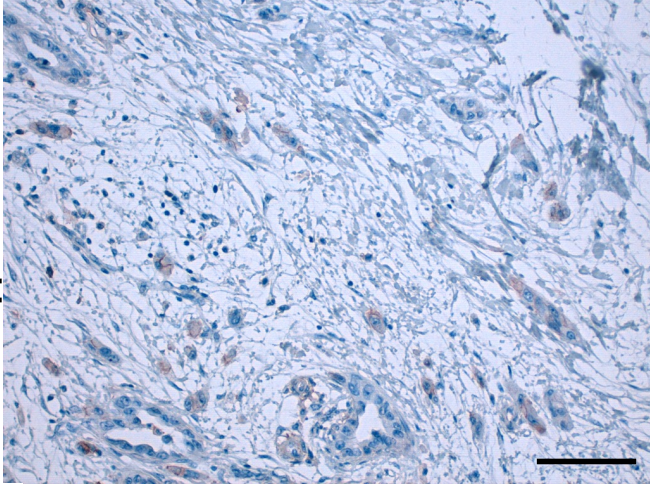
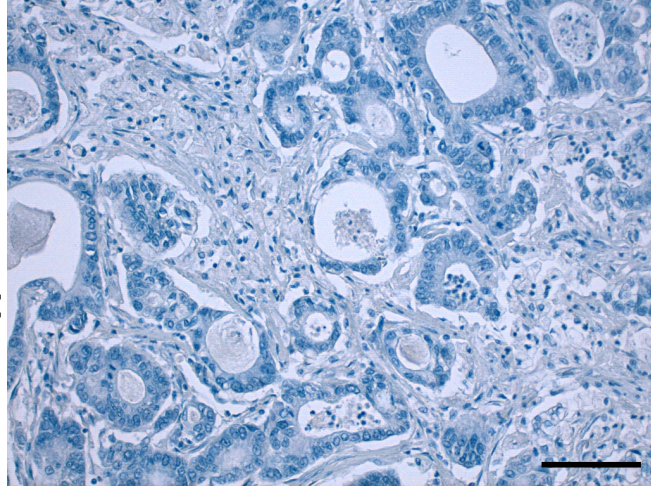
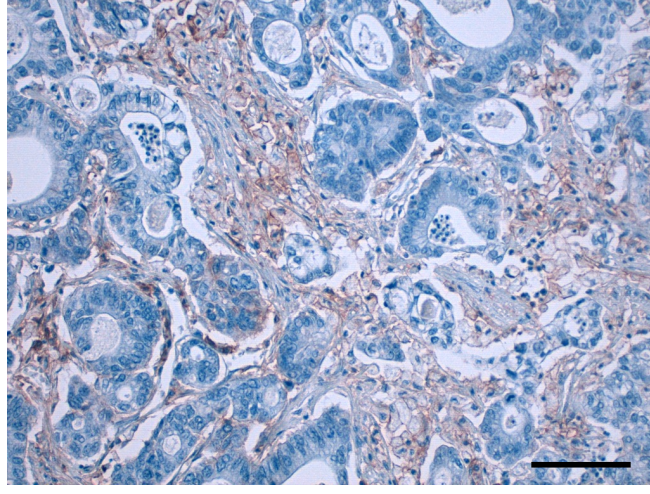
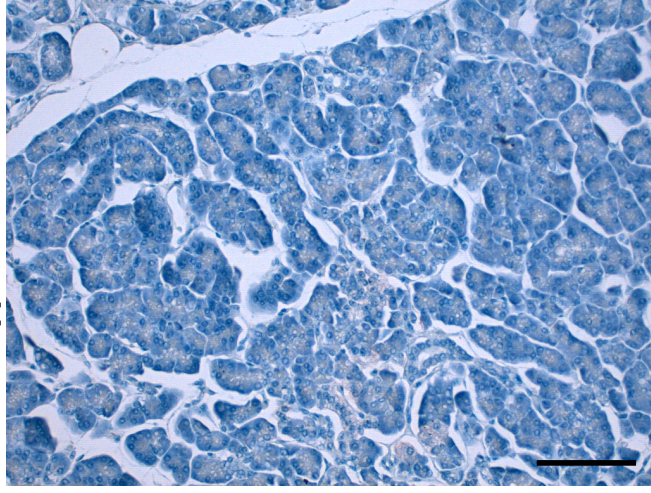
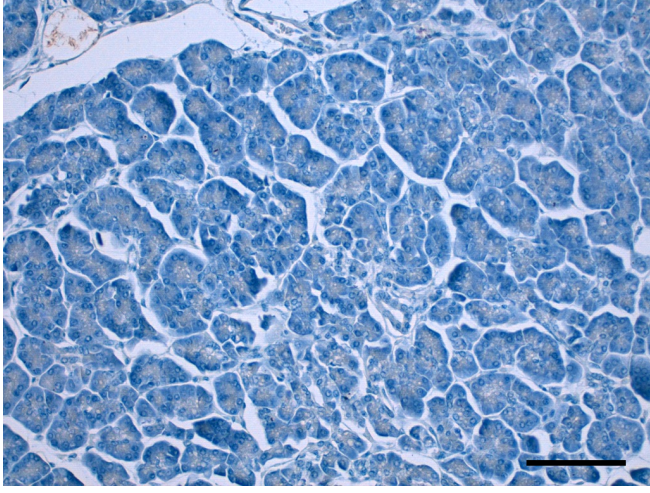
C₄₄Mab-3



C₄₄Mab-46



Supplementary Figure S2 Immunohistochemical analysis using C₄₄Mab-3 and C₄₄Mab-46 against oral squamous cell carcinoma tissues. After antigen retrieval, the sections were incubated with 5 $\mu\text{g}/\text{mL}$ of C₄₄Mab-3 (A) and 1 $\mu\text{g}/\text{mL}$ of C₄₄Mab-46 (B), followed by treatment with the Envision+ kit. The color was developed using 3,3'-diaminobenzidine tetrahydrochloride (DAB), and the sections were counterstained with hematoxylin. Scale bar = 100 μm .

A**C₄₄Mab-3****B****C₄₄Mab-46****C****C₄₄Mab-3****D****C₄₄Mab-46****E****C₄₄Mab-3****F****C₄₄Mab-46****G****C₄₄Mab-3****H****C₄₄Mab-46**

Supplementary Figure S3. Immunohistochemical analysis using C₄₄Mab-3 and C₄₄Mab-46 against pancreatic adenocarcinomas and normal pancreatic tissues. After antigen retrieval, serial sections of pancreatic carcinoma tissue arrays (Catalog number: PA241c) were incubated with 1 μ g/mL of C₄₄Mab-3 or C₄₄Mab-46 followed by treatment with the Envision+ kit. The color was developed using 3,3'-diaminobenzidine tetrahydrochloride (DAB), and the sections were counterstained with hematoxylin. Scale bar = 100 μ m. (A–F) pancreatic adenocarcinomas; (G, H) normal pancreas tissues.

(A) C₄₄Mab-3 showed the membranous staining in pancreatic carcinoma cells with relatively larger cytoplasm, but not surrounding ductal structure of PDAC and stromal tissues. (B) C₄₄Mab-46 stained both type of PDAC. (C, D) The diffusely spread tumor cells in stroma were stained by both C₄₄Mab-3 and C₄₄Mab-46. (E, F) In well-differentiated PDAC, both C₄₄Mab-3 and C₄₄Mab-46 never stained the tumor cells. (F) In addition, stromal staining by C₄₄Mab-46 was observed in several tissues. (G) Importantly, normal pancreatic epithelial cells were never stained by C₄₄Mab-3.