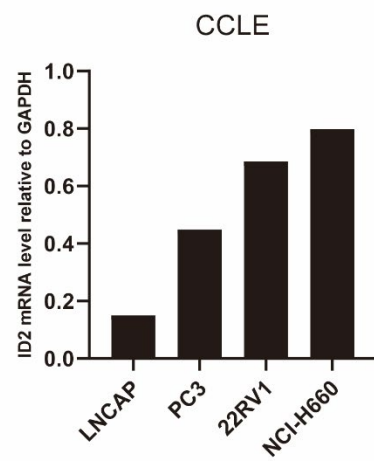


(A)



(B)

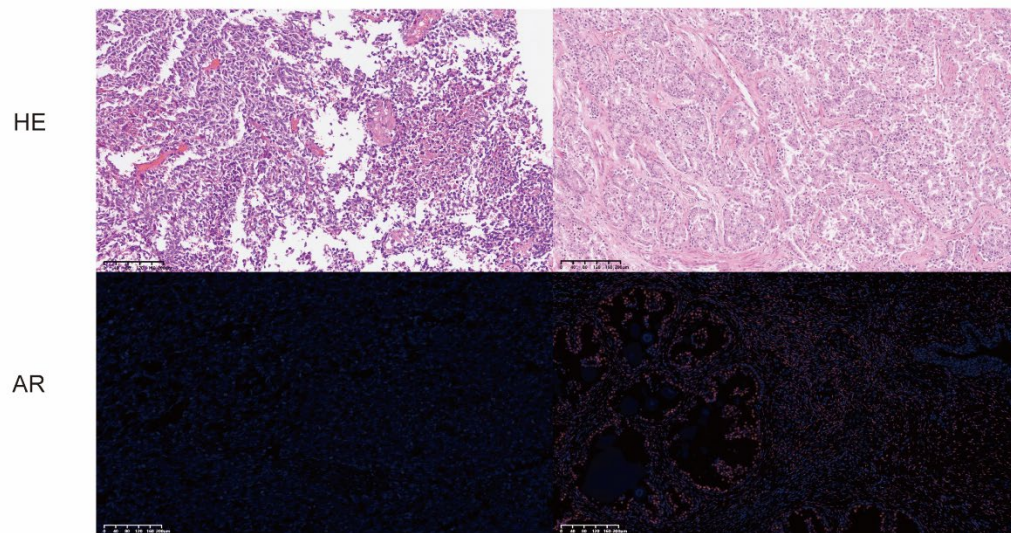


Figure S1

A. relative ID2 expression level in PCa cell lines from CCLE. **B.** HE staining and immunofluorescent of clinical PCa patients.

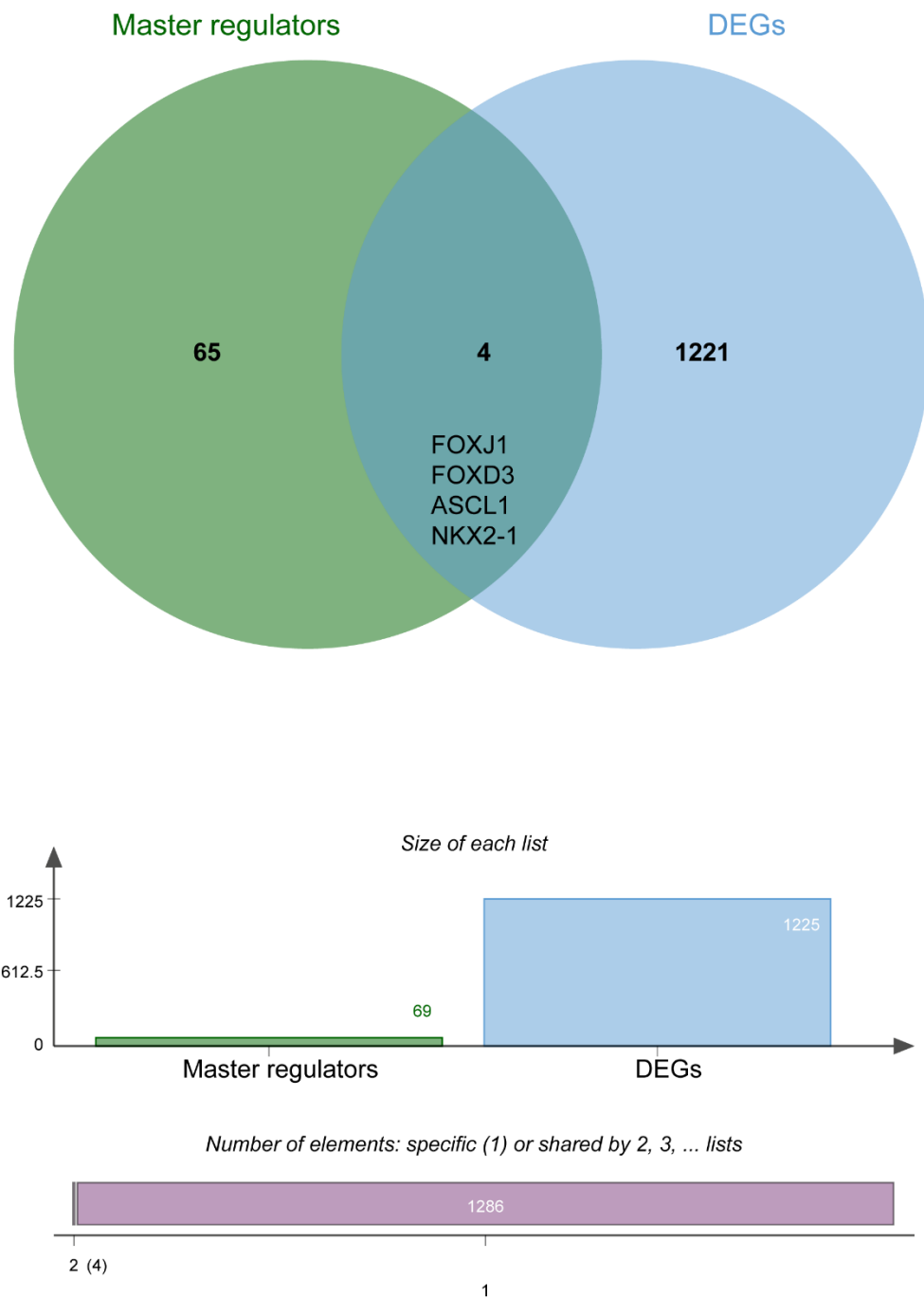


Figure S2

Intersection of Master regulators and DEGs. Master regulators was identified by viper R packages to infer effects of ID2 on protein activity changes. DEGs was identified using RNA-seq data of clinical NEPC and ADPC samples from SU2C 2019.

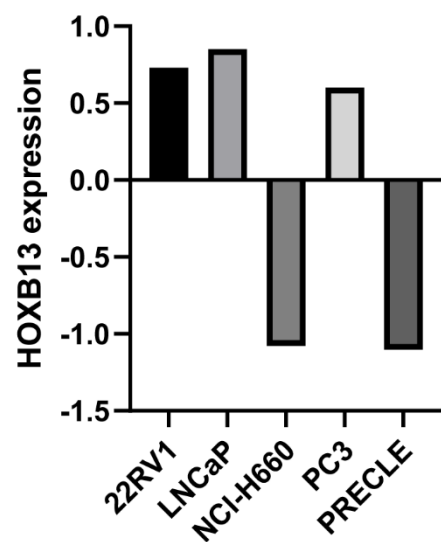
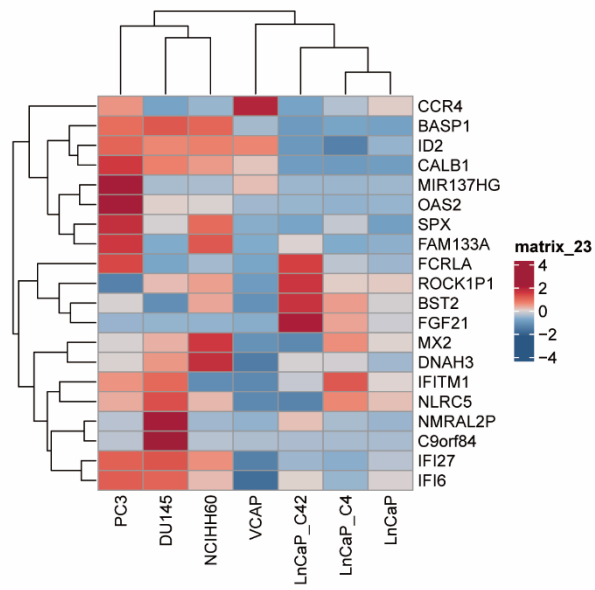


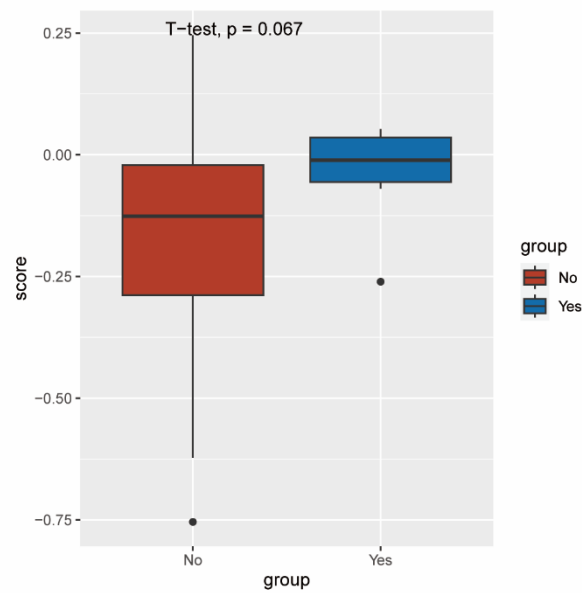
Figure S3

z-score normalized HOXB13 mRNA expression in PCa cell lines from CCLE.

(A)



(B)



(C)

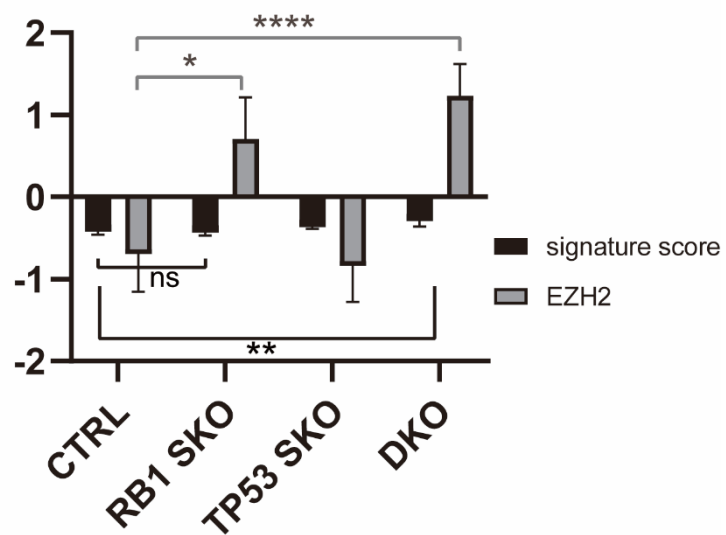


Figure S4

A. Expression of top 20 DEGs in PCa cell lines. **B.** ID2 UP50 signature score in clinical sample with NE features or not. **C.** ID2 UP50 signature analysis and EZH2 expression analysis after RB1 or TP53 gene knock out in LNCaP cell. SKO: single knock out. DKO: double knock out.