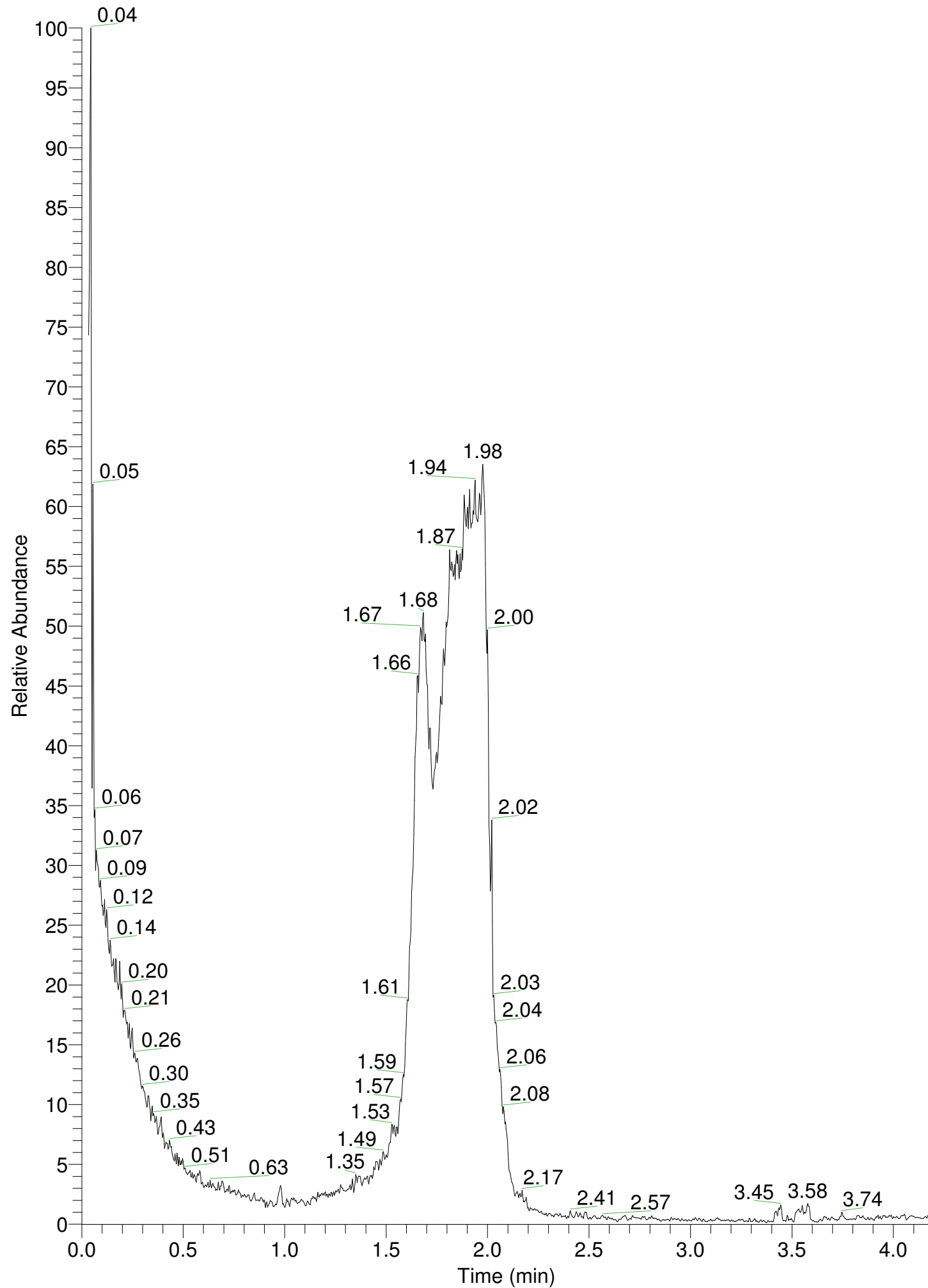


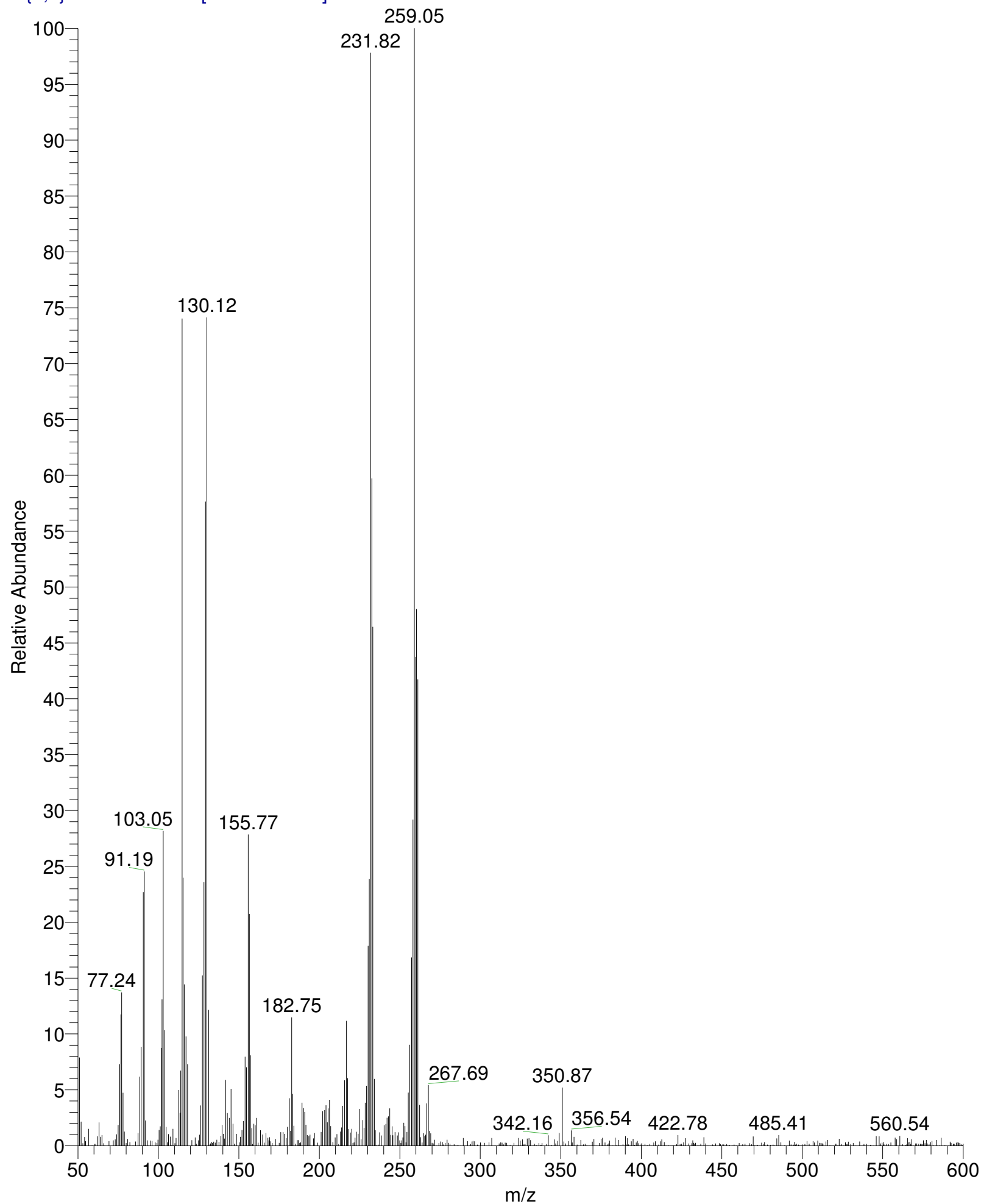
RT: 0.00 - 4.19

NL:
3.02E6
TIC MS
Hayam-130



Hayam-130 #526 RT: 1.82 AV: 1 NL: 1.15E5

T: {0,0} + c EI Full ms [50.00-600.00]



Hayam-130#526 RT: 1.82

T: {0,0} + c EI Full ms [50.00-600.00]

m/z= 50.00-600.03

m/z	Intensity	Relative
51.01	9026.9	7.88
52.01	2441.5	2.13
53.10	225.2	0.20
54.23	878.0	0.77
54.83	445.7	0.39
55.53	0.2	0.00
56.70	1705.6	1.49
57.96	0.3	0.00
58.77	38.3	0.03
59.58	0.2	0.00
60.41	172.0	0.15
61.05	165.9	0.14
62.16	944.4	0.82
63.18	2371.2	2.07
63.93	884.5	0.77
64.90	1064.8	0.93
66.00	234.9	0.21
66.51	0.0	0.00
67.37	0.2	0.00
68.23	1.7	0.00
69.34	452.0	0.39
70.38	3.3	0.00
71.22	10.7	0.01
72.03	523.5	0.46
73.22	625.6	0.55
74.06	1141.3	1.00
75.01	2104.7	1.84
75.95	8354.8	7.29
76.72	13446.3	11.74
77.24	15713.0	13.72
78.09	5400.5	4.71
78.90	1421.7	1.24
80.00	253.1	0.22
80.93	665.1	0.58
82.25	359.0	0.31
84.25	35.7	0.03
85.80	401.7	0.35
87.33	1284.7	1.12
88.50	7058.7	6.16
89.25	10125.3	8.84
90.64	25986.6	22.68
91.19	28094.6	24.52
91.95	2561.0	2.24
93.16	539.3	0.47
93.87	2.4	0.00
95.08	501.9	0.44
96.14	472.9	0.41
97.98	321.1	0.28
99.12	243.7	0.21
99.74	585.9	0.51
100.41	1581.9	1.38
101.12	1970.6	1.72
101.76	10014.6	8.74
102.28	14979.0	13.07
103.05	32253.1	28.15

Hayam-130#526 RT: 1.82

T: {0,0} + c EI Full ms [50.00-600.00]

m/z= 50.00-600.03

m/z	Intensity	Relative
103.97	11839.9	10.33
104.81	1909.3	1.67
105.48	338.4	0.30
106.24	1167.2	1.02
107.43	915.5	0.80
108.05	22.4	0.02
109.04	1716.7	1.50
109.67	20.7	0.02
110.27	224.5	0.20
110.95	773.3	0.68
112.68	5682.6	4.96
113.35	3365.7	2.94
113.90	7686.3	6.71
114.79	84808.8	74.03
115.40	27454.4	23.96
116.03	16515.1	14.42
117.13	11194.7	9.77
118.11	8347.4	7.29
120.20	2.9	0.00
120.82	557.0	0.49
121.32	4.5	0.00
122.80	824.7	0.72
123.64	193.8	0.17
124.88	520.9	0.45
125.56	1109.0	0.97
126.25	4102.6	3.58
127.37	17452.4	15.23
128.34	27000.2	23.57
129.25	66026.9	57.63
130.12	84932.3	74.14
131.17	13903.4	12.14
131.96	108.9	0.10
132.48	218.6	0.19
132.99	369.7	0.32
133.53	242.3	0.21
134.38	395.7	0.35
135.36	295.6	0.26
136.25	594.5	0.52
137.67	365.9	0.32
138.89	991.4	0.87
139.53	2105.9	1.84
140.36	1191.0	1.04
141.00	708.1	0.62
141.90	6723.4	5.87
142.89	3322.0	2.90
144.00	2831.3	2.47
145.17	5812.1	5.07
146.31	2239.1	1.95
147.19	180.9	0.16
148.48	1188.2	1.04
149.44	18.4	0.02
150.37	332.8	0.29
150.91	880.8	0.77
151.87	1584.1	1.38
152.82	2513.5	2.19

Hayam-130#526 RT: 1.82

T: {0,0} + c EI Full ms [50.00-600.00]

m/z= 50.00-600.03

m/z	Intensity	Relative
153.85	9103.2	7.95
154.73	8026.6	7.01
155.77	31890.7	27.84
156.48	23733.6	20.72
157.24	9244.6	8.07
157.99	1781.5	1.56
158.50	140.7	0.12
159.29	2234.6	1.95
160.19	2091.8	1.83
160.85	2825.3	2.47
162.04	290.2	0.25
163.41	1561.6	1.36
164.73	1127.5	0.98
165.75	285.4	0.25
166.88	1286.0	1.12
168.03	799.5	0.70
168.59	522.3	0.46
169.15	840.2	0.73
169.79	427.3	0.37
170.71	240.3	0.21
171.67	0.0	0.00
172.75	668.4	0.58
173.39	6.8	0.01
175.03	261.5	0.23
176.09	1374.2	1.20
177.44	1365.2	1.19
178.39	1194.9	1.04
179.45	778.1	0.68
180.13	1918.3	1.67
181.32	4839.0	4.22
182.04	1503.4	1.31
182.75	13148.9	11.48
183.40	5309.1	4.63
184.12	2029.6	1.77
185.29	183.5	0.16
186.27	548.1	0.48
186.89	552.0	0.48
187.75	253.7	0.22
188.33	329.3	0.29
189.21	4379.9	3.82
190.31	3856.1	3.37
190.95	3454.0	3.01
191.62	2137.1	1.87
192.47	1078.1	0.94
193.50	964.6	0.84
194.15	1117.3	0.98
196.42	719.8	0.63
196.98	1293.5	1.13
197.98	22.2	0.02
198.98	293.7	0.26
201.14	1392.7	1.22
202.07	3523.8	3.08
203.24	3635.7	3.17
204.12	4133.9	3.61
204.98	2397.9	2.09

Hayam-130#526 RT: 1.82

T: {0,0} + c EI Full ms [50.00-600.00]

m/z= 50.00-600.03

m/z	Intensity	Relative
205.51	3815.1	3.33
206.30	4695.6	4.10
207.09	1994.9	1.74
207.68	15.5	0.01
208.42	359.5	0.31
208.99	3.8	0.00
209.80	821.6	0.72
210.93	1165.0	1.02
211.95	158.8	0.14
213.10	1432.7	1.25
213.83	1842.7	1.61
214.55	4059.1	3.54
215.68	6684.6	5.83
216.79	12786.5	11.16
217.62	6904.3	6.03
218.29	1691.8	1.48
219.33	1330.9	1.16
220.12	1704.5	1.49
220.85	240.5	0.21
221.57	327.3	0.29
222.17	818.0	0.71
223.04	1414.3	1.23
224.08	1200.3	1.05
224.89	3744.2	3.27
225.90	659.1	0.58
227.04	2603.9	2.27
227.76	1808.5	1.58
228.46	4398.3	3.84
229.36	6120.2	5.34
230.26	20492.1	17.89
231.05	27313.4	23.84
231.82	112057.1	97.81
232.61	68417.0	59.72
233.26	53201.9	46.44
234.15	6824.5	5.96
234.77	1567.8	1.37
235.76	68.9	0.06
236.62	81.3	0.07
237.40	1340.0	1.17
238.50	1038.7	0.91
240.26	2089.2	1.82
241.27	2203.2	1.92
242.05	2842.8	2.48
242.91	2991.2	2.61
243.78	3805.1	3.32
244.37	1080.8	0.94
245.13	1966.9	1.72
245.71	1047.6	0.91
247.02	1362.7	1.19
248.47	1021.2	0.89
249.15	1348.8	1.18
249.95	528.8	0.46
250.64	259.1	0.23
251.29	520.8	0.45
251.80	829.4	0.72

Hayam-130#526 RT: 1.82

T: {0,0} + c EI Full ms [50.00-600.00]

m/z= 50.00-600.03

m/z	Intensity	Relative
252.48	2329.9	2.03
253.22	1983.9	1.73
253.74	337.2	0.29
254.44	1390.0	1.21
255.23	5427.6	4.74
256.11	10325.1	9.01
257.25	19291.9	16.84
258.18	33417.1	29.17
259.05	114563.4	100.00
259.82	50115.9	43.75
260.33	55013.3	48.02
261.20	47786.7	41.71
262.23	4166.0	3.64
263.06	848.8	0.74
263.85	300.4	0.26
264.84	1267.2	1.11
265.43	964.9	0.84
266.08	1105.7	0.97
266.76	4321.5	3.77
267.69	6201.8	5.41
268.37	1499.3	1.31
269.22	1251.6	1.09
270.07	276.2	0.24
270.76	212.3	0.19
271.59	594.8	0.52
272.68	19.4	0.02
274.21	246.8	0.22
275.30	414.0	0.36
276.42	346.9	0.30
277.17	110.0	0.10
278.15	245.9	0.21
279.31	582.2	0.51
280.32	275.3	0.24
281.13	193.6	0.17
281.96	0.8	0.00
282.50	5.1	0.00
283.75	132.3	0.12
284.44	12.8	0.01
285.18	1.4	0.00
286.17	74.6	0.07
287.57	0.8	0.00
289.43	774.1	0.68
290.24	1.6	0.00
291.11	0.2	0.00
292.10	444.6	0.39
293.31	0.0	0.00
293.99	147.0	0.13
294.87	405.7	0.35
295.42	470.7	0.41
296.42	422.9	0.37
297.30	0.4	0.00
298.30	94.2	0.08
298.85	16.5	0.01
300.02	304.2	0.27
300.97	0.2	0.00

Hayam-130#526 RT: 1.82

T: {0,0} + c EI Full ms [50.00-600.00]

m/z= 50.00-600.03

m/z	Intensity	Relative
302.66	268.0	0.23
304.10	5.2	0.00
305.45	323.8	0.28
306.54	4.9	0.00
307.12	765.5	0.67
307.84	5.3	0.00
308.72	0.7	0.00
309.47	10.3	0.01
310.21	0.0	0.00
311.00	0.1	0.00
311.63	217.5	0.19
312.69	331.0	0.29
313.46	291.0	0.25
314.31	118.2	0.10
315.48	280.6	0.24
316.29	273.0	0.24
316.87	23.3	0.02
317.88	21.2	0.02
318.97	71.1	0.06
320.36	0.5	0.00
320.95	267.7	0.23
321.83	0.0	0.00
322.39	5.3	0.00
323.00	0.0	0.00
323.83	765.6	0.67
324.75	507.2	0.44
326.22	626.8	0.55
327.04	106.6	0.09
327.82	164.4	0.14
329.14	704.3	0.61
330.26	752.3	0.66
331.19	546.9	0.48
332.42	7.3	0.01
332.96	1.5	0.00
333.66	196.7	0.17
334.76	41.5	0.04
335.33	0.9	0.00
336.34	246.1	0.21
337.14	26.9	0.02
337.72	66.4	0.06
338.39	247.8	0.22
339.61	7.0	0.01
340.30	0.2	0.00
341.09	140.1	0.12
342.16	1045.4	0.91
343.08	1.1	0.00
344.31	59.0	0.05
345.95	624.5	0.55
346.80	209.3	0.18
347.41	0.9	0.00
348.10	461.3	0.40
349.04	1280.1	1.12
350.87	5954.2	5.20
351.91	406.0	0.35
352.94	208.8	0.18

Hayam-130#526 RT: 1.82

T: {0,0} + c EI Full ms [50.00-600.00]

m/z= 50.00-600.03

m/z	Intensity	Relative
353.81	0.1	0.00
354.54	456.4	0.40
355.34	0.1	0.00
356.54	1555.9	1.36
357.10	315.6	0.28
358.18	890.2	0.78
359.48	0.3	0.00
360.12	93.6	0.08
361.16	0.0	0.00
362.49	560.5	0.49
363.96	113.4	0.10
365.12	196.4	0.17
365.92	0.1	0.00
366.50	0.0	0.00
367.52	9.1	0.01
368.09	0.3	0.00
369.54	388.4	0.34
370.55	666.5	0.58
371.92	0.2	0.00
373.98	252.8	0.22
374.99	698.7	0.61
375.89	787.1	0.69
376.42	0.0	0.00
377.50	317.2	0.28
378.50	13.5	0.01
379.07	114.7	0.10
379.78	217.8	0.19
380.29	506.4	0.44
381.02	0.0	0.00
381.90	22.8	0.02
382.49	0.4	0.00
383.81	806.7	0.70
384.57	32.9	0.03
385.85	575.3	0.50
386.38	19.7	0.02
387.09	0.2	0.00
387.82	0.6	0.00
388.62	136.6	0.12
389.31	15.0	0.01
390.12	969.4	0.85
390.68	107.9	0.09
391.41	747.0	0.65
392.13	113.2	0.10
392.65	0.0	0.00
393.16	10.7	0.01
393.81	421.6	0.37
394.90	698.4	0.61
395.85	63.7	0.06
396.84	299.9	0.26
397.62	460.7	0.40
398.27	221.8	0.19
399.03	0.1	0.00
399.81	114.5	0.10
400.36	247.3	0.22
401.03	0.7	0.00

Hayam-130#526 RT: 1.82

T: {0,0} + c EI Full ms [50.00-600.00]

m/z= 50.00-600.03

m/z	Intensity	Relative
401.71	1.2	0.00
402.30	173.6	0.15
403.17	0.1	0.00
403.76	27.6	0.02
404.28	0.0	0.00
405.36	173.9	0.15
406.47	7.6	0.01
407.74	301.8	0.26
408.68	431.6	0.38
409.60	0.3	0.00
410.20	7.6	0.01
410.71	95.3	0.08
411.70	438.0	0.38
412.75	623.5	0.54
413.53	5.3	0.00
414.28	357.5	0.31
414.99	0.1	0.00
415.52	6.8	0.01
416.95	31.1	0.03
417.87	0.1	0.00
418.47	0.0	0.00
419.35	1.3	0.00
420.05	28.5	0.02
420.72	0.8	0.00
421.92	138.2	0.12
422.78	1062.4	0.93
424.14	155.5	0.14
425.07	185.0	0.16
426.31	325.7	0.28
427.66	756.9	0.66
428.59	1.0	0.00
429.58	213.7	0.19
430.11	0.0	0.00
431.37	223.2	0.19
431.91	522.1	0.46
432.52	261.3	0.23
433.04	185.9	0.16
433.71	269.6	0.24
434.85	0.0	0.00
435.49	0.1	0.00
436.02	0.0	0.00
436.99	186.7	0.16
437.79	0.1	0.00
438.85	846.4	0.74
439.45	0.2	0.00
440.00	216.6	0.19
441.08	12.8	0.01
441.93	0.1	0.00
442.85	0.2	0.00
444.22	115.0	0.10
444.99	23.5	0.02
445.50	0.0	0.00
446.10	207.3	0.18
447.10	0.1	0.00
447.82	1.0	0.00

Hayam-130#526 RT: 1.82

T: {0,0} + c EI Full ms [50.00-600.00]

m/z= 50.00-600.03

m/z	Intensity	Relative
448.46	233.3	0.20
449.19	133.8	0.12
449.98	5.2	0.00
450.56	124.5	0.11
451.18	116.7	0.10
452.22	2.8	0.00
453.00	143.1	0.12
453.78	0.0	0.00
454.79	68.3	0.06
456.26	12.3	0.01
456.78	0.9	0.00
457.59	80.5	0.07
458.40	0.0	0.00
459.33	29.9	0.03
460.77	259.9	0.23
461.95	0.0	0.00
462.99	127.6	0.11
464.40	180.8	0.16
465.11	1.0	0.00
466.67	3.3	0.00
467.17	238.9	0.21
468.37	135.2	0.12
469.54	920.3	0.80
470.50	28.9	0.03
471.31	0.1	0.00
472.23	61.7	0.05
473.31	0.2	0.00
474.06	0.0	0.00
474.77	281.5	0.25
475.75	185.4	0.16
476.51	351.8	0.31
477.21	2.3	0.00
478.30	95.8	0.08
479.26	0.0	0.00
480.33	78.2	0.07
481.86	91.8	0.08
482.77	20.1	0.02
484.12	722.6	0.63
485.41	1063.7	0.93
486.70	333.5	0.29
489.07	35.5	0.03
490.03	2.3	0.00
491.89	514.0	0.45
493.04	102.5	0.09
494.42	96.3	0.08
495.19	373.0	0.33
495.73	87.0	0.08
496.45	194.8	0.17
497.58	94.6	0.08
498.13	21.8	0.02
498.86	0.0	0.00
499.55	15.3	0.01
500.11	116.6	0.10
500.72	0.0	0.00
501.66	154.3	0.13

Hayam-130#526 RT: 1.82

T: {0,0} + c EI Full ms [50.00-600.00]

m/z= 50.00-600.03

m/z	Intensity	Relative
502.33	0.0	0.00
502.95	451.7	0.39
504.25	188.2	0.16
505.41	0.7	0.00
506.71	449.6	0.39
507.53	310.8	0.27
508.46	0.3	0.00
508.97	0.0	0.00
509.65	513.8	0.45
510.58	271.8	0.24
511.59	254.1	0.22
512.24	235.3	0.21
512.89	177.8	0.16
514.68	403.2	0.35
515.74	564.0	0.49
517.11	28.4	0.02
517.84	0.1	0.00
518.51	0.1	0.00
519.39	3.0	0.00
520.62	198.5	0.17
521.42	193.5	0.17
522.10	37.9	0.03
522.99	682.0	0.60
523.79	0.0	0.00
524.40	141.3	0.12
525.71	1.3	0.00
526.84	326.7	0.29
527.42	135.8	0.12
528.13	148.4	0.13
528.67	382.8	0.33
530.09	144.1	0.13
530.69	11.6	0.01
531.64	244.1	0.21
532.71	15.8	0.01
533.31	0.1	0.00
534.66	0.1	0.00
535.69	411.5	0.36
536.56	6.8	0.01
537.20	0.1	0.00
538.32	145.6	0.13
538.93	4.6	0.00
540.00	178.2	0.16
540.82	1.0	0.00
542.35	63.8	0.06
542.91	12.0	0.01
544.21	0.3	0.00
545.90	960.0	0.84
547.72	948.7	0.83
548.72	219.1	0.19
549.56	295.5	0.26
550.28	347.3	0.30
550.81	106.0	0.09
551.64	7.9	0.01
552.34	174.1	0.15
553.54	155.7	0.14

Hayam-130#526 RT: 1.82

T: {0,0} + c EI Full ms [50.00-600.00]

m/z= 50.00-600.03

m/z	Intensity	Relative
555.04	310.3	0.27
555.82	4.5	0.00
557.69	811.4	0.71
558.57	648.7	0.57
560.54	987.2	0.86
561.72	0.0	0.00
562.24	133.6	0.12
563.00	0.0	0.00
564.28	42.8	0.04
564.81	119.2	0.10
565.42	748.0	0.65
565.96	331.2	0.29
566.72	360.9	0.32
567.42	178.9	0.16
568.03	646.5	0.56
569.11	0.2	0.00
570.41	207.9	0.18
571.19	200.2	0.17
572.40	182.7	0.16
573.46	180.8	0.16
573.97	168.4	0.15
574.70	160.4	0.14
575.29	527.3	0.46
576.20	221.3	0.19
577.04	572.6	0.50
577.69	209.1	0.18
578.24	0.0	0.00
578.82	140.6	0.12
579.78	348.7	0.30
580.61	477.7	0.42
581.56	24.0	0.02
582.75	0.3	0.00
583.27	571.3	0.50
583.95	14.4	0.01
585.29	31.3	0.03
586.26	795.2	0.69
587.27	0.1	0.00
588.51	24.5	0.02
589.22	23.2	0.02
589.99	12.6	0.01
590.93	1.6	0.00
591.88	393.3	0.34
592.46	257.0	0.22
593.17	2.5	0.00
593.76	189.3	0.17
594.35	174.8	0.15
595.09	23.6	0.02
595.76	298.4	0.26
596.65	373.9	0.33
597.29	257.2	0.22
597.92	244.6	0.21
598.65	129.8	0.11
599.33	46.0	0.04
599.97	182.6	0.16