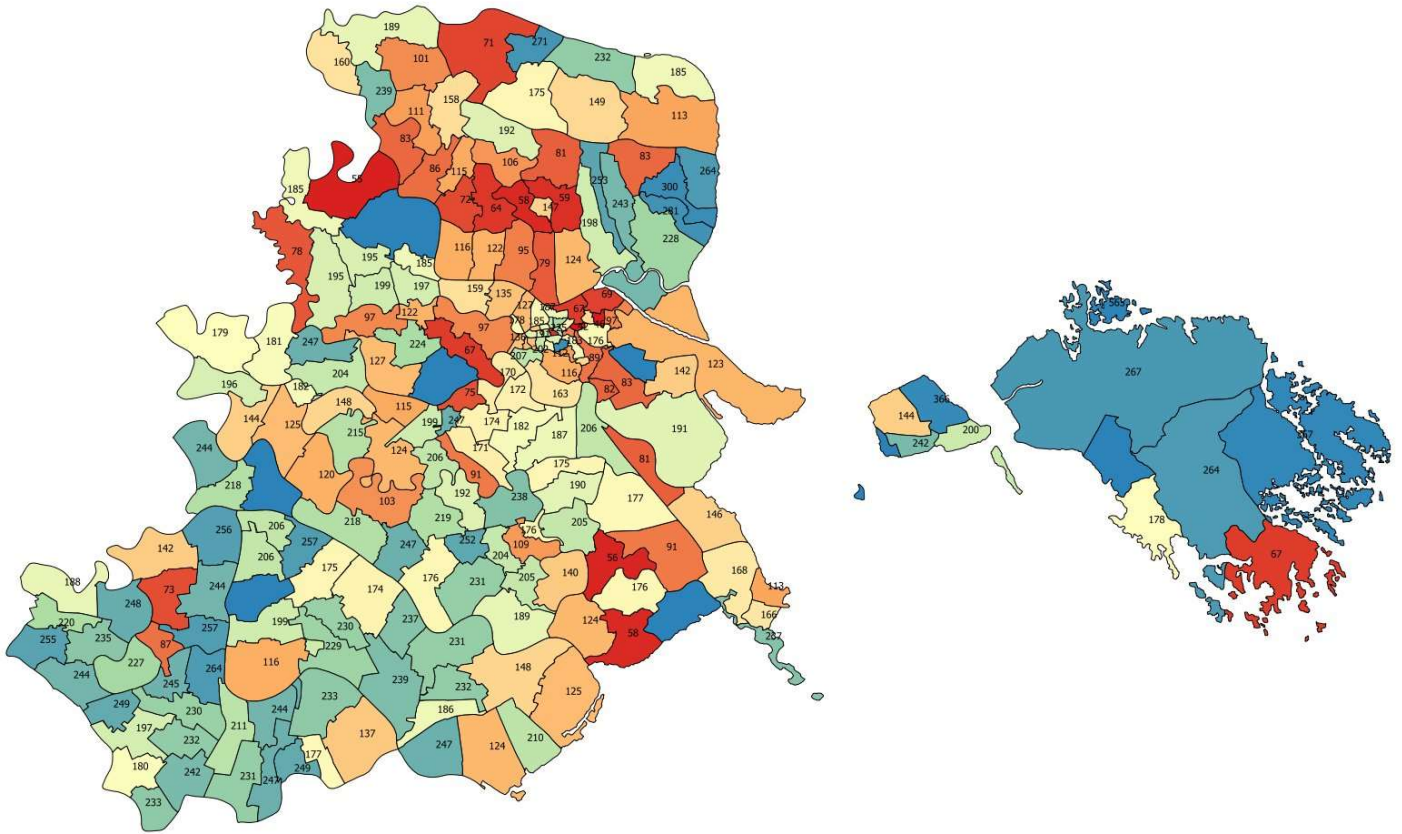
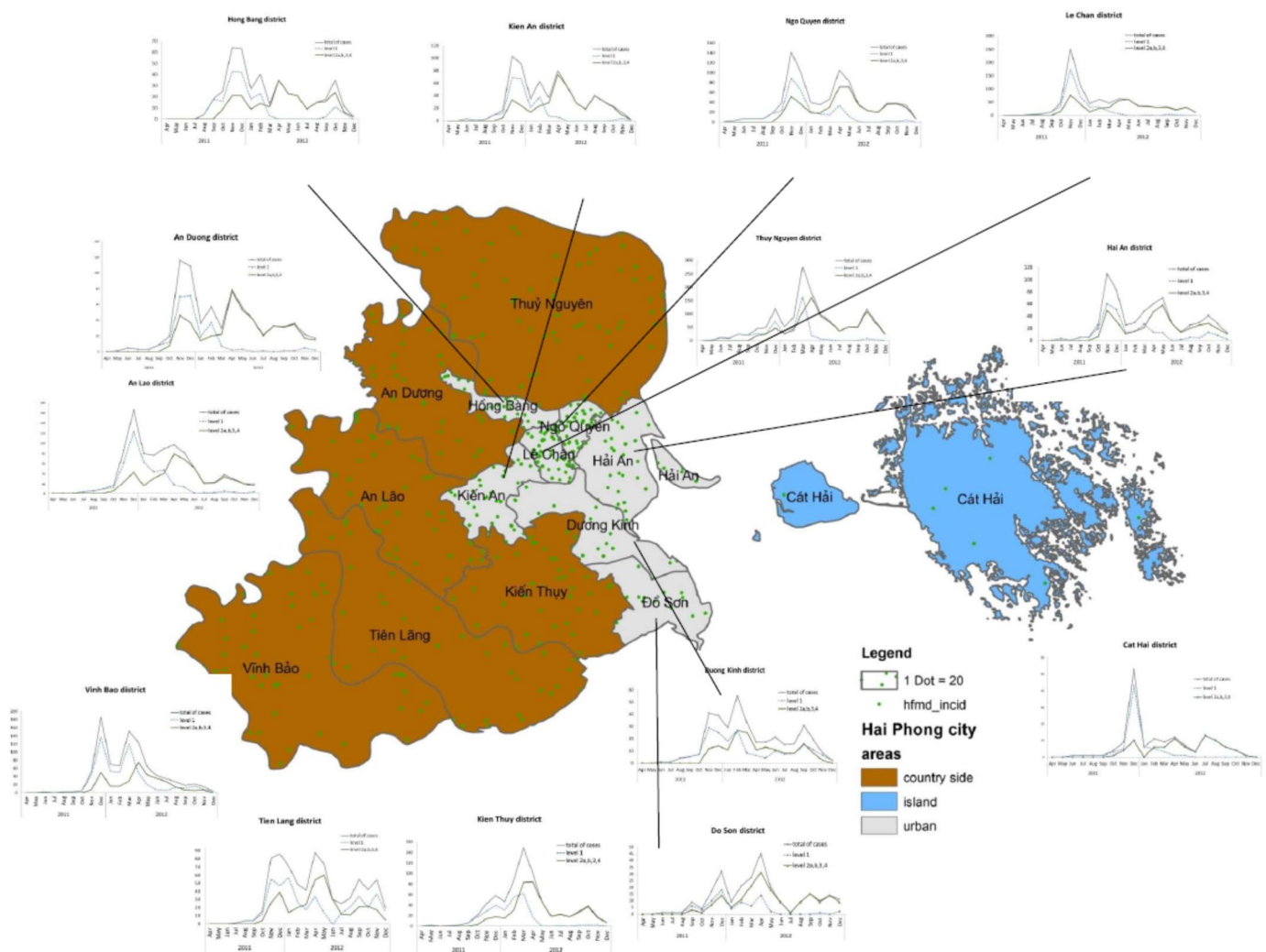


**Figure S1.** Land cover for Hải Phòng District. Red. Urban areas. Artificial surfaces growth between 2000-2010 is in pink. Resolution 30x30m. Figure 1 in grayscale has been superimposed on the map.



**Figure S2.** Occurrence of HFMD index cases ( $t_0$ ) in each commune of the Hải Phòng region. Colors represent interval of occurrence of the index case in each commune. Red is for the short time  $t_0$  and blue for a longer time. HFMD started in the center of Hải Phòng City, then spread towards north west and after south west. Numbers represent Communes ID as given in supplementary Table 2.



**Figure S3.** Monthly distribution of HFMD patients per district of the Hải Phòng region. Level 1 correspond to non-severe cases according to guidelines from the Vietnamese Ministry of Health. Patients present only mouth ulcers and/or skin lesions. Higher level patients have additions symptoms. Patients at level 2b any higher are considered as severe cases in the present study (see legend of supplementary Table 1 for severity level definition).

**Video S1.** Local heterogeneity of the epidemic. This film summarizes the number of cases over time in each commune (<https://filesender.renater.fr/?s=download&token=d75a1140-63fc-4df8-bb9a-ab20f19ee067>). The EMD (Earth Mother Distance) method was used to compare case distribution between communes.