

Supplementary Materials

Ethyl 2-acetoxy-4-phenyl-4H-chromene-3-carboxylate

Nevena I. Petkova-Yankova*, Ana I. Koleva and Rositca D. Nikolova*

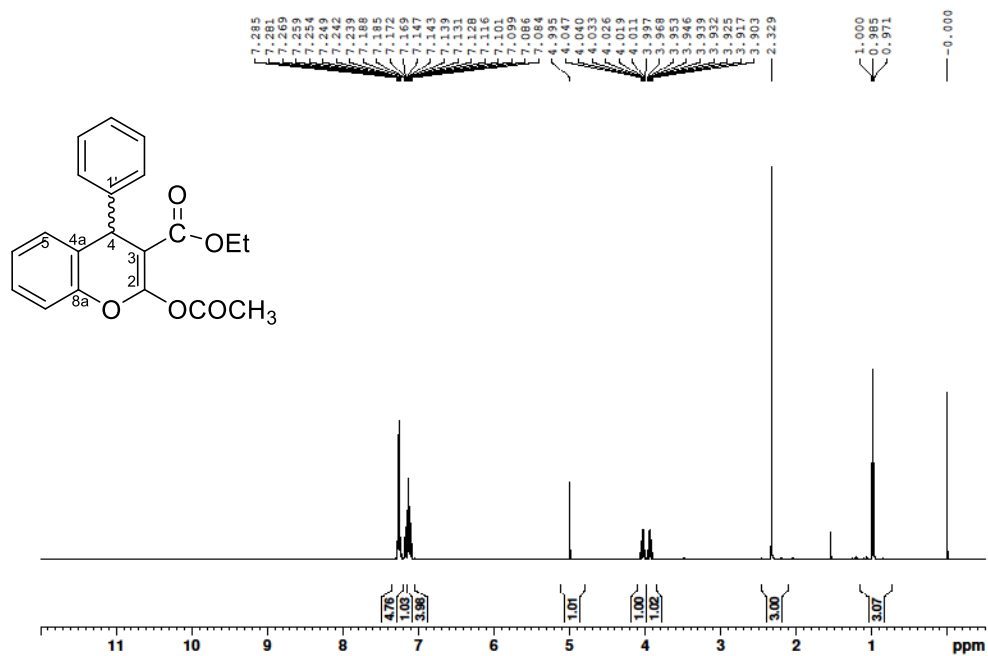
² Faculty of Chemistry and Pharmacy, Sofia University St. Kl. Ohridski, Sofia, Bulgaria, ohak@chem.uni-sofia.bg;

* Correspondence: nikolova@chem.uni-sofia.bg ; nipetkova@chem.uni-sofia.bg

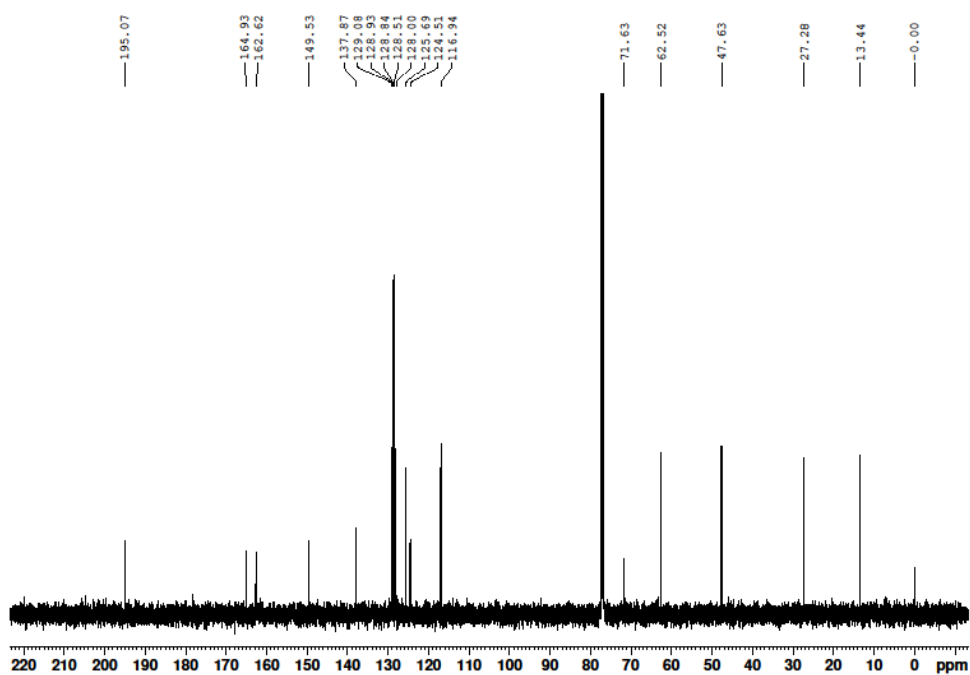
List of contents:

¹ H NMR spectrum of ethyl 2-acetoxy-4-phenyl-4H-chromene-3-carboxylate in CDCl ₃	S2
¹³ C NMR spectrum of ethyl 2-acetoxy-4-phenyl-4H-chromene-3-carboxylate in CDCl ₃	S2
DEPT135 spectrum of ethyl 2-acetoxy-4-phenyl-4H-chromene-3-carboxylate in CDCl ₃	S3
¹³ C NMR with DEPT135 spectra of ethyl 2-acetoxy-4-phenyl-4H-chromene-3-carboxylate in CDCl ₃	S3
2D COSY spectrum of ethyl 2-acetoxy-4-phenyl-4H-chromene-3-carboxylate in CDCl ₃	S4
{ ¹ H, ¹³ C} HSQC spectrum of ethyl 2-acetoxy-4-phenyl-4H-chromene-3-carboxylate in CDCl ₃	S4
{ ¹ H, ¹³ C} HMBC spectrum of ethyl 2-acetoxy-4-phenyl-4H-chromene-3-carboxylate in CDCl ₃	S5
NOESY spectrum of ethyl 2-acetoxy-4-phenyl-4H-chromene-3-carboxylate in CDCl ₃	S5

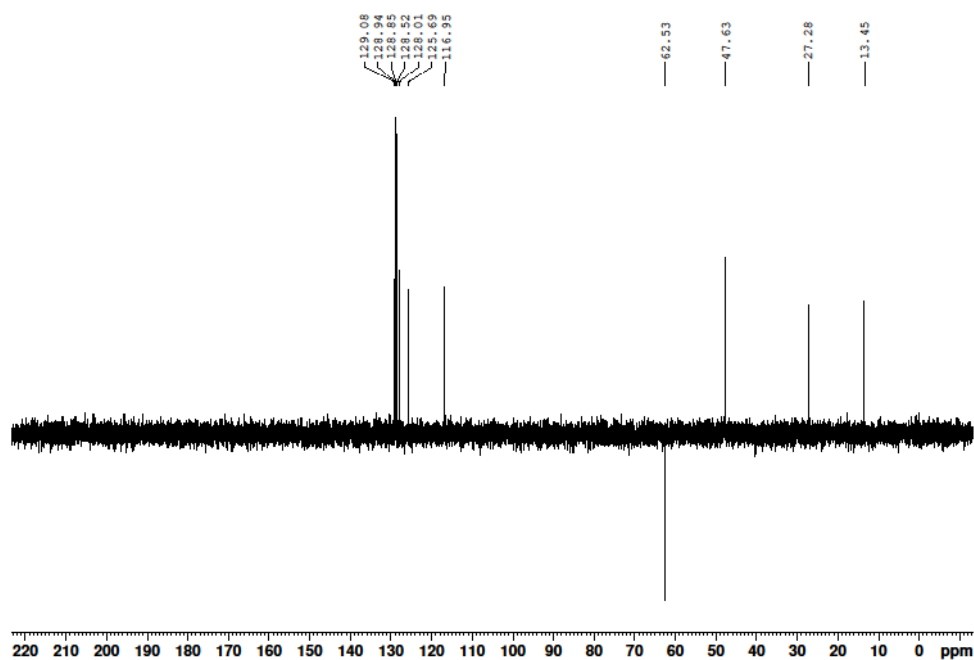
^1H NMR spectrum of ethyl 2-acetoxy-4-phenyl-4*H*-chromene-3-carboxylate in CDCl_3



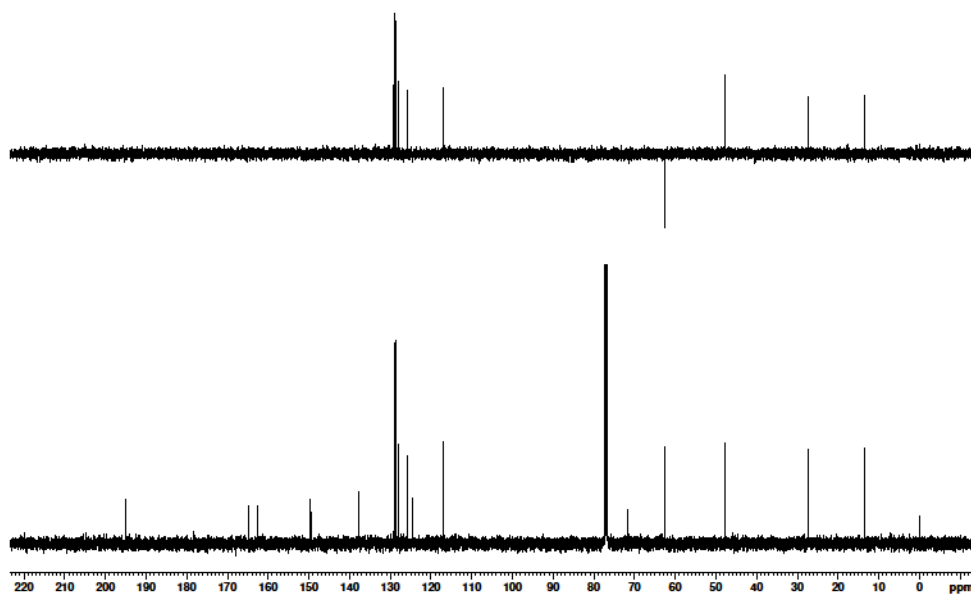
^{13}C NMR spectrum of ethyl 2-acetoxy-4-phenyl-4*H*-chromene-3-carboxylate in CDCl_3



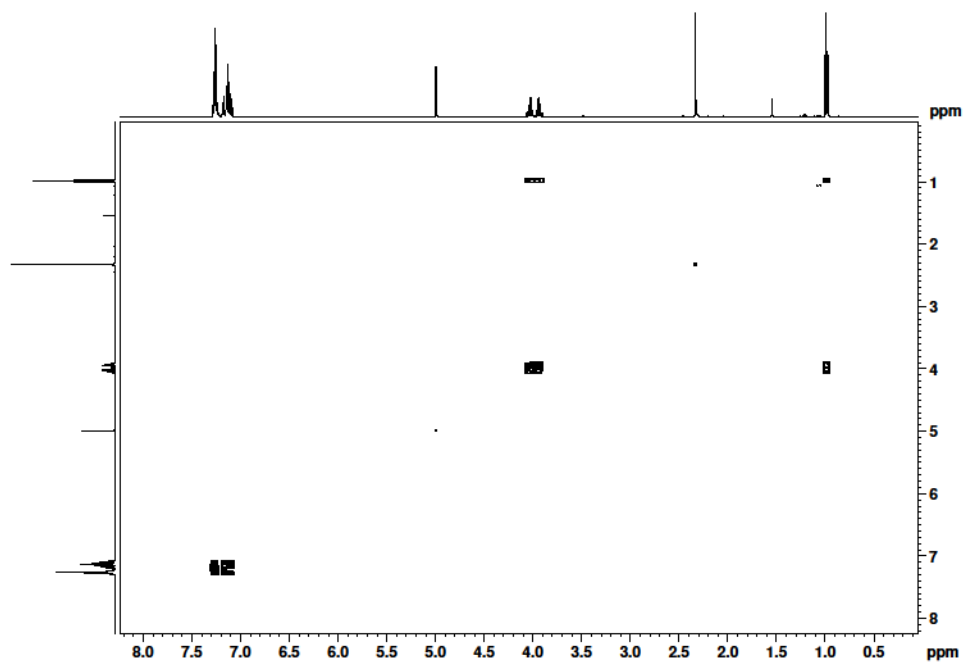
DEPT135 spectra of ethyl 2-acetoxy-4-phenyl-4*H*-chromene-3-carboxylate in CDCl₃



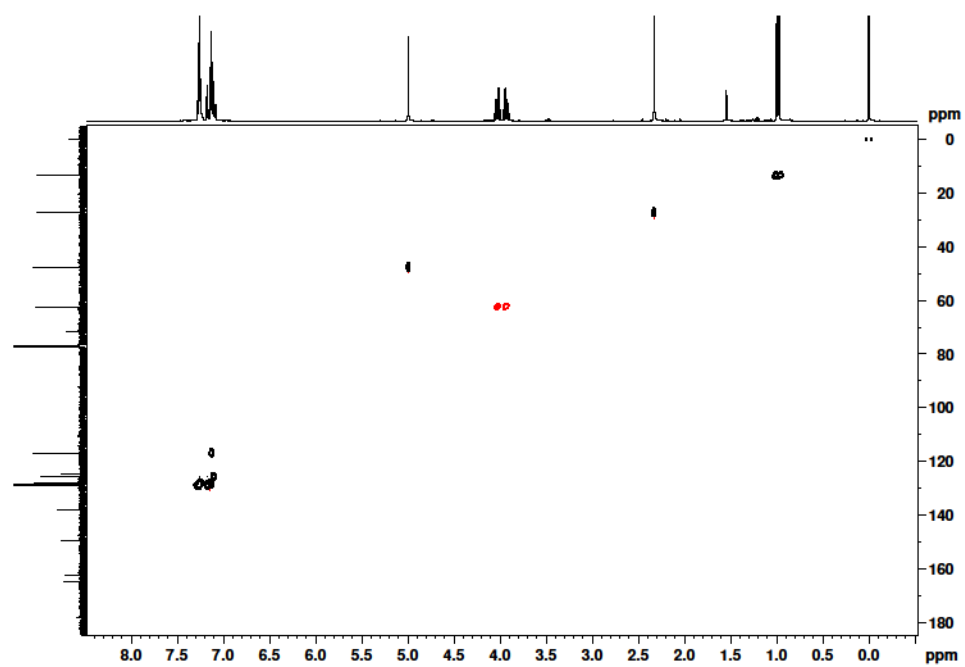
¹³C NMR with DEPT135 spectra of ethyl 2-acetoxy-4-phenyl-4*H*-chromene-3-carboxylate in CDCl₃



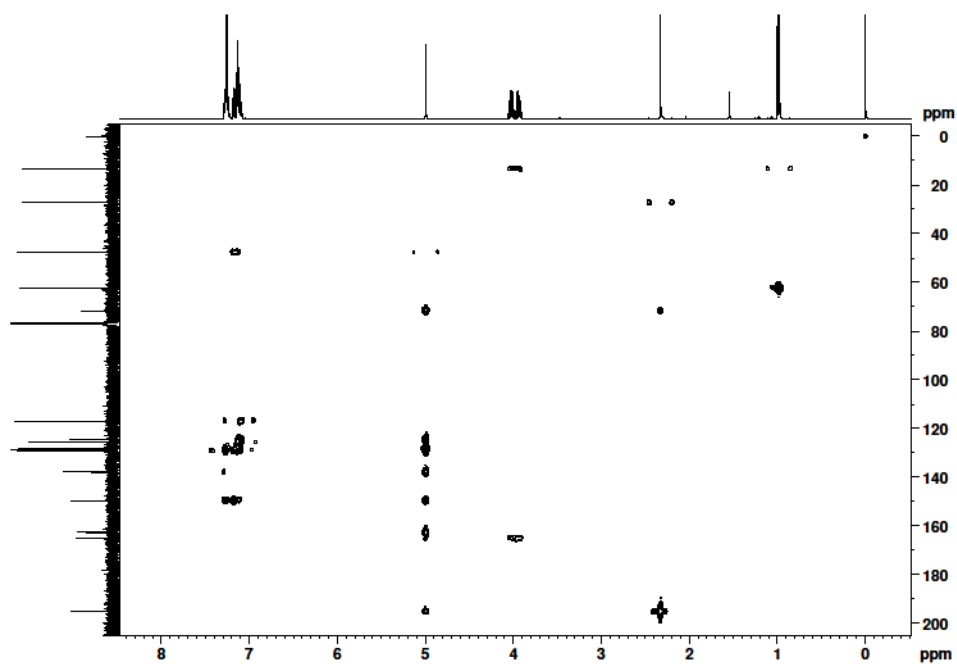
2D COSY spectrum of ethyl 2-acetoxy-4-phenyl-4*H*-chromene-3-carboxylate in CDCl₃



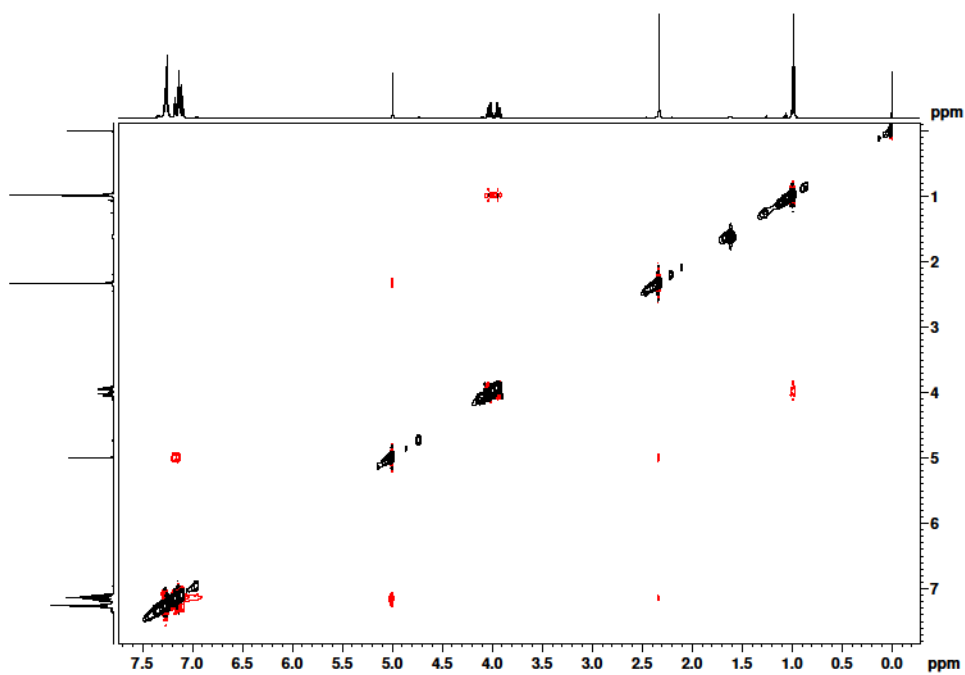
¹H,¹³C} HSQC spectrum of ethyl 2-acetoxy-4-phenyl-4*H*-chromene-3-carboxylate in CDCl₃



$\{^1\text{H}, ^{13}\text{C}\}$ HMBC spectrum of ethyl 2-acetoxy-4-phenyl-4*H*-chromene-3-carboxylate in CDCl_3



NOESY spectrum of ethyl 2-acetoxy-4-phenyl-4*H*-chromene-3-carboxylate in CDCl_3



Two ECG strips are shown. The left strip has handwritten notes above it: 'Vorstudie 1/8x', 'Zeit 2:00', and 'Verstärkung 4'. The right strip has handwritten notes above it: 'Puls 75', 'Rhythmus 75', and 'Normales EKG'. Both strips show a regular sinus rhythm with a rate of approximately 75 bpm. The left strip shows a regular rhythm with a rate of approximately 75 bpm. The right strip shows a regular rhythm with a rate of approximately 75 bpm.

NPY-1139 #579 BT-5 54 AV: 1 NL: 1.09E+008
206040.737388157505
[21.000000, 8.00] Full ms [83.0000-1245.0000]
210835.19185105732329
2062300003510045000088
m/z

PY-1139 #581 RT: 5.56 AV: 1 NL: 4.28E+007
 371.1484889759034
 FTMS + CESTFTMS [83.0000-1245.0000]
 2.33893372 15192394 13376
 1224.0000 1224.0000 1224.0000
 350550063 117200039095