

Figure 1C

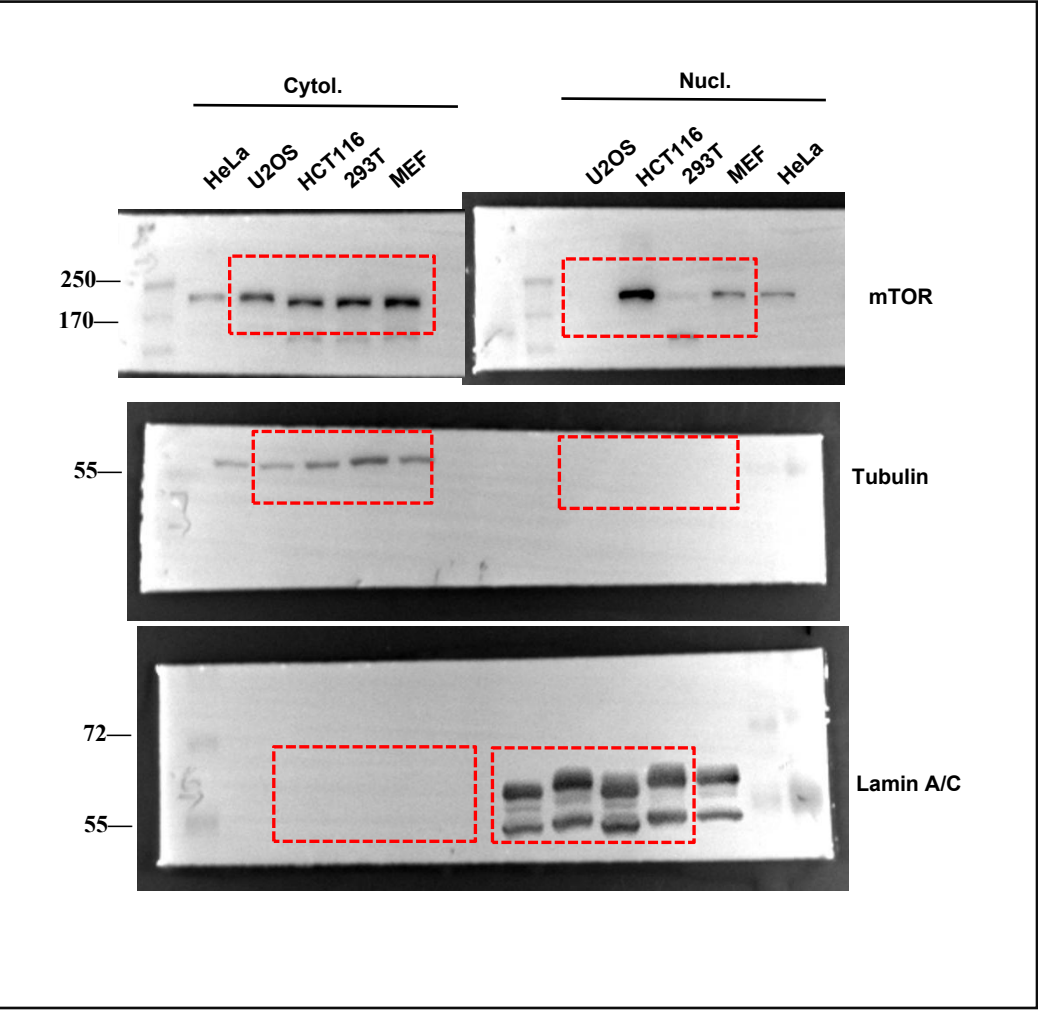
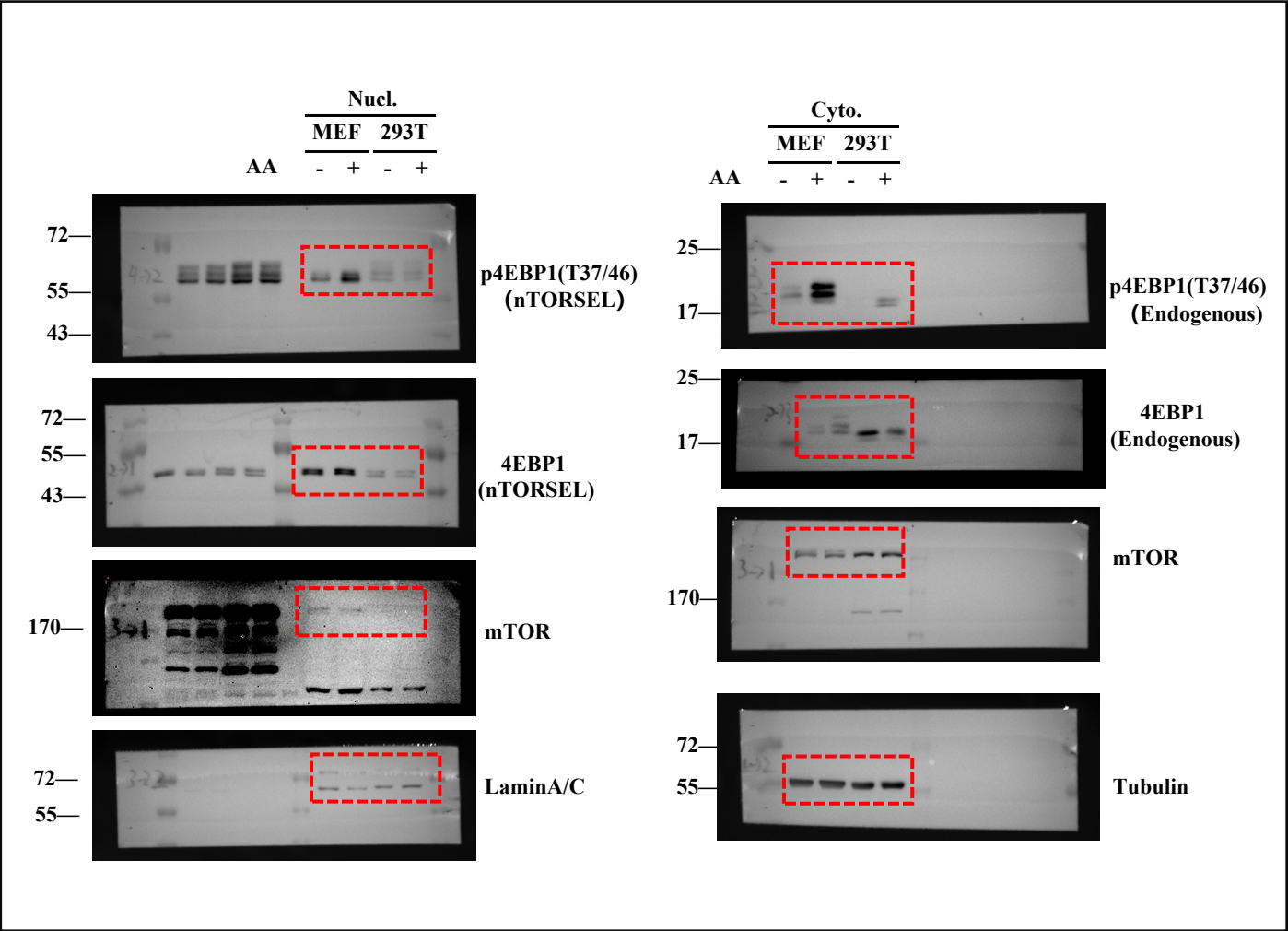


Figure 1F



Western blot analysis showing the effect of Torin1, Rapamycin (Rapa), and GSK690693 on S6 phosphorylation. The blots are probed for pS6 (S235/S236), total S6, and GAPDH (loading control). The lanes are labeled: DMSO, Torin1, Rapa, FBS, GSK690693, and LY294002. A red dashed box highlights the pS6 bands in the first five lanes. Molecular weight markers (35 kDa) are indicated on the left. GAPDH is used as a loading control, with its bands also highlighted by a red dashed box.

